

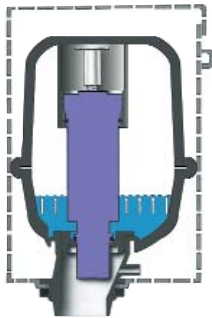
***FLUSHMATE***<sup>®</sup>  
**Pressure Assist Operating System**

---

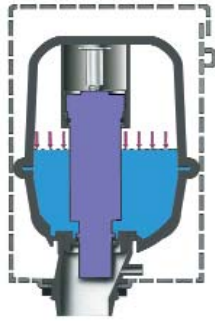


*“Performance Without Compromise”*

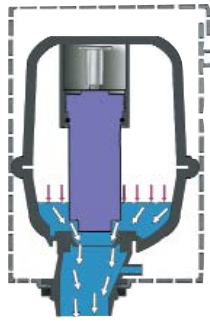
# HOW FLUSHMATE® WORKS



**Water Flows  
to Vessel**



**Vessel Ready  
to Flush**



**Air Pressure  
Empties  
Vessel**

*The FLUSHMATE® vessel traps air, and as it fills with water, it uses the water supply line pressure to compress the trapped air inside. The compressed air is what forces the water into the bowl, so instead of the “pulling” or siphon action of a gravity unit, the pressure-assist unit “pushes” waste out. This vigorous flushing action cleans the bowl better than gravity units.*

## FLUSHMATE III - 503 Series Components List

### 1. Lower Supply Group with Hose BL100504-3

- A. Supply Shank with Screen
- B. Pressure regulator with Back Check (preset at 35 psi)
- C. Relief Valve (preset at 60 psi)

### 2. Upper Supply Group BU100505

- D. Air Inducer
- E. Vacuum Breaker

### 3. Flush Valve Cartridge Assembly C-100500

- F. Actuator with setscrew

### 4. Vessel

### 5. Discharge Extension with Drain

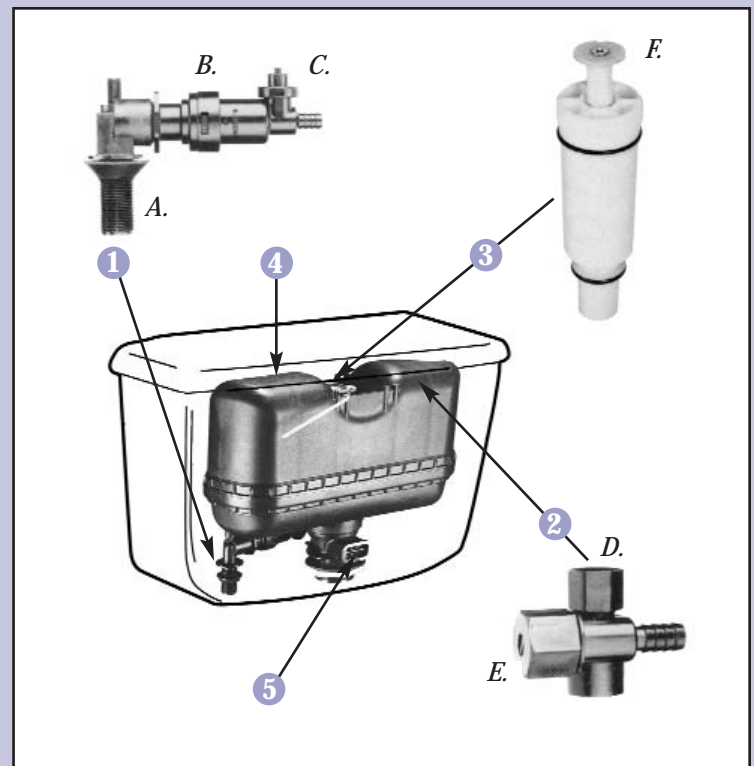
### Installation Requirement:

Minimum line pressure range of 20 to 125 psi.

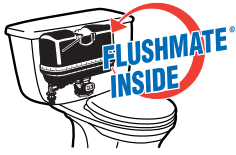
FLUSHMATE is an integral part of a complete toilet and is not designed to be used on gravity-type toilets.

### Warranty:

All FLUSHMATE units carry a five (5) year limited warranty.

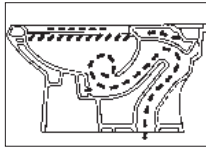


## Superior Performance



- FLUSHMATE uses pressure instead of gravity, creating the strongest flushing action.
- Uses less than 1.6 gallons (6 liters) per flush without sacrificing performance (saves up to 20% more water than conventional 1.6 gpf technologies).

## Advanced Bowl Design



- FLUSHMATE-equipped bowl with jet is hydraulically designed to "push" contents out of trapway instead of gravity siphoning.
- FLUSHMATE-equipped water closets eliminate the need to double flush. The reason is the trapway design, with fewer bends.
- Toilets with FLUSHMATE use a siphon-jet bowl to meet and exceed ANSI/ASME A112.19.2M and CSA B-45 performance requirements.

## Largest Trapway



- The 2" trapway expands to an average of 3" at key points to facilitate the removal of waste. This results in reducing stoppages by as much as 90% over conventional 1.6 gpf technologies.
- FLUSHMATE-equipped water closets have trapways that are specifically designed to allow waste to be extracted earlier in the flush. Unlike gravity trapways, which require a choke area or siphon bend that ultimately restricts flow.

## Largest Water Surface Area



- Offers THE largest water surface area (10" x 12" / 254 mm x 305 mm).
- More water in the bowl reduces odors and keeps the bowl cleaner by reducing the dry surface area, thereby reducing housekeeping chores.

## Non-Sweating Tank



- Water is contained in the FLUSHMATE vessel. The result is a non-sweating toilet—so the floor around the toilet remains dry.
- The additional cost of an insuliner tank is not necessary.

## Conventional Installation



- Installs in the same standard dimensional area as a conventional water closet. A minimum of 20 pounds-per-square-inch (138 kPa) water pressure is required, which is typical in residential housing.
- FLUSHMATE-equipped toilets are available in 10" and 12" rough-in, in all popular colors.
- Requires no special tools for installation.
- Fewer moving parts, so there's less chance for things to go wrong.
- All FLUSHMATE units carry a five (5) year limited warranty.

Water Surface Area: largest available	YES	NO
Trapway Dimension: largest available	YES	NO
Flushing Action: strongest available	YES	NO
Tank sweats	NO	YES*
May require double flushing	NO	YES

\* Without Insuliner tank.

# SUPERIOR DRAINLINE CARRY PERFORMANCE

## WATER CLOSET TYPE

## AVERAGE CARRY\*

Average Consumption  
1.6 gpf / 6 lpf  
Sloan FLUSHMATE®



Average Consumption  
1.6 gpf / 6 lpf  
Gravity



60 feet (18 meters)					
30 feet (9 meters)					

\* As recorded ASPE Research Report 91-01.



**FLUSHMATE®**  
A Division of  
Sloan Valve Company

**The Choice is Clear:  
Sloan *FLUSHMATE*  
for Performance  
and True Water  
Conservation**

*Toilets with Sloan FLUSHMATE inside offer the public the best opportunity to achieve true water conservation without sacrificing performance. Sloan FLUSHMATE supplies FLUSHMATE pressure-assist systems to virtually every leading fixture manufacturer in the United States. Toilets with FLUSHMATE inside are offered in a wide variety of styles and colors. In installation after installation, no other pressure unit except FLUSHMATE has the proven track record of reliability.*



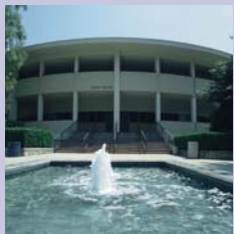
**IN HOTELS**

*FLUSHMATE toilets are installed in leading hotels, assuring guests' visits are not compromised.*



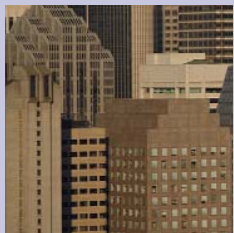
**IN RESIDENTIAL HOMES**

*FLUSHMATE toilets were preferred by professional builders in a nationwide survey because of their superior performance characteristics.*



**IN DORMITORIES**

*For high-traffic situations, FLUSHMATE assures the integrity of the plumbing system with its strong performance.*



**IN LIGHT COMMERCIAL APPLICATIONS**

*Whether it's in a restaurant or a small mall, the hygiene, cleanliness and performance of FLUSHMATE toilets offer the highest efficiency possible to tenants AND landlords.*

*In application after application, Sloan FLUSHMATE proves to be the leading conservation choice **without** compromising performance.*

***The Best Toilets Have***



Manufactured under one or more of the following U.S. patents: 3,817,279; 3,817, 286; 3,817,489; 3,820,171,754; and 4,233,698. Also covered by various foreign patents (country and number available upon request) and other patents pending.

**ISO 9001 Quality System Certified**

