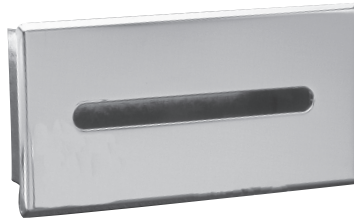
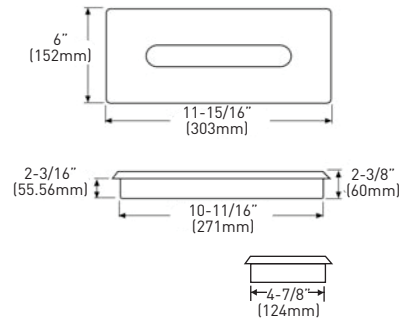


Taymor



RECESSED TISSUE DISPENSER

- INCLUDES #8 x 1-1/4" (32mm) SCREWS
- WALL OPENING: 11-3/8" (289mm) x 5-1/8" (130mm)
- **RECESSED CONTAINER**
- CONSTRUCTION: GALVANIZED SHEET METAL 0.031" (0.8mm) – 22 GAUGE WALL THICKNESS
- **FACE PLATE**
- CONSTRUCTION: COLD ROLLED POLISHED CHROME PLATED STEEL 0.031" (0.8mm) – 22 GAUGE WALL THICKNESS



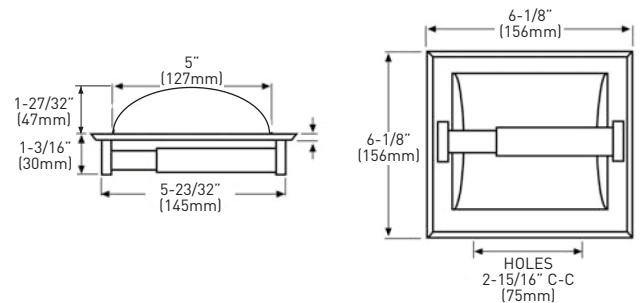
PKG	C26 POLISHED CHROME	CASE PACK
C	01-1010	6

C = CONTRACTOR PACK



RECESSED PAPER HOLDER

- POSTS SECURELY RIVETED TO HOUSING
- COUNTERSUNK MOUNTING HOLES
- WALL OPENING: 5-1/8" (130mm) x 5-1/8" (130mm)
- INCLUDES #10 x 2" (50.80mm) MOUNTING SCREWS
- **ROLLER**
- CONSTRUCTION: WHITE PLASTIC WITH SPRING TENSION



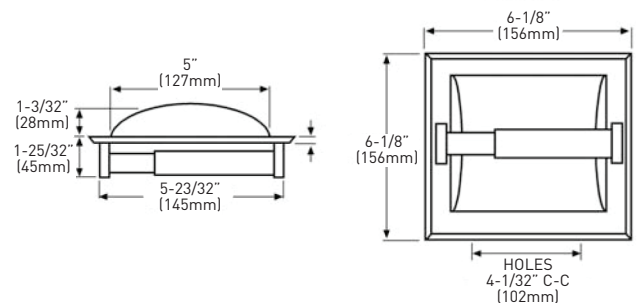
PKG	C15 SATIN NICKEL	C26 POLISHED CHROME	CASE PACK
C		01-101S	50
R		02-D101S	5
R	02-D101SSN		4

C = CONTRACTOR PACK / R = RETAIL PACK



RECESSED PAPER HOLDER

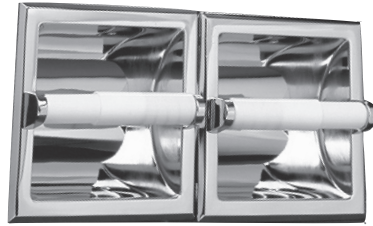
- POSTS SECURELY RIVETED TO HOUSING
- COUNTERSUNK MOUNTING HOLES
- WALL OPENING: 5-1/8" (130mm) x 5-1/8" (130mm)
- INCLUDES #10 x 2" (50.80mm) MOUNTING SCREWS FOR SCREW-IN APPLICATION
- **ROLLER**
- CONSTRUCTION: WHITE PLASTIC WITH SPRING TENSION



PKG	C26 POLISHED CHROME	CASE PACK
C	01-1863C	50
C	01-1863S	50

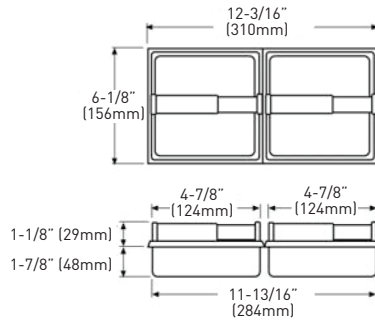
C = CONTRACTOR PACK

Taymor



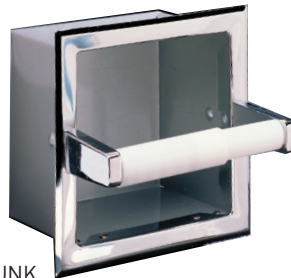
TWIN RECESSED PAPER HOLDER

- RECESSED CONTAINER HOUSING WITH COUNTERSUNK MOUNTING HOLES
- INCLUDES #8 x 1-1/4" (32mm) MOUNTING SCREWS FOR SCREW-IN APPLICATION
- WALL OPENING: 11-3/16 (284mm) x 5-1/8 (130mm)
- POSTS SECURELY RIVETED TO HOUSING
- ROLLER
- CONSTRUCTION: WHITE PLASTIC WITH SPRING TENSION



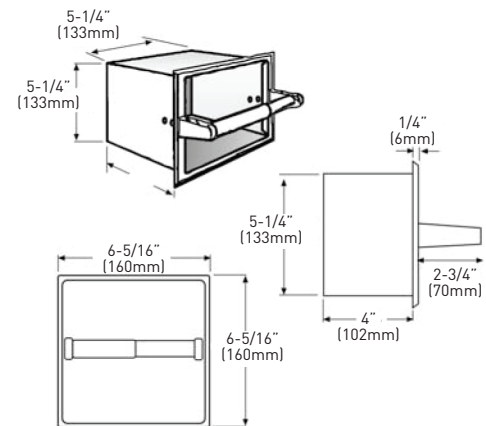
PKG	C26 POLISHED CHROME	CASE PACK
C	01-TW101S	10

C = CONTRACTOR PACK



RECESSED EXTRA ROLL PAPER HOLDER

- RECESSED CONTAINER HOUSING WITH COUNTERSUNK MOUNTING HOLES
- INCLUDES #8 x 1-1/4" (32mm) MOUNTING SCREWS FOR SCREW-IN APPLICATION
- WALL OPENING: 5-5/16 (135mm) x 5-5/16 (135mm)
- POSTS SECURELY RIVETED TO HOUSING
- RECESSED CONTAINER
- CONSTRUCTION: GALVANIZED SHEET METAL
- ROLLER
- CONSTRUCTION: WHITE PLASTIC WITH SPRING TENSION



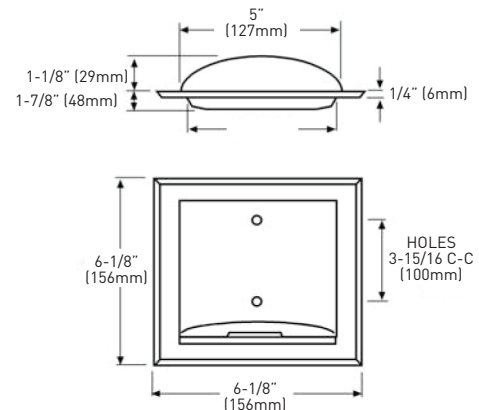
PKG	C26 POLISHED CHROME	CASE PACK
C	01-1070	10

C = CONTRACTOR PACK



RECESSED SOAP HOLDER

- RECESSED CONTAINER HOUSING WITH COUNTERSUNK MOUNTING HOLES
- INCLUDES #10 x 2" (51mm) MOUNTING SCREWS FOR SCREW-IN APPLICATION
- WALL OPENING: 5-1/8" (130mm) x 5-1/8" (130mm)
- NON-REMOVABLE SOAP DISH



PKG	C26 POLISHED CHROME	CASE PACK
C	01-1861C	50
C	01-1861S	50

CEMENT-IN

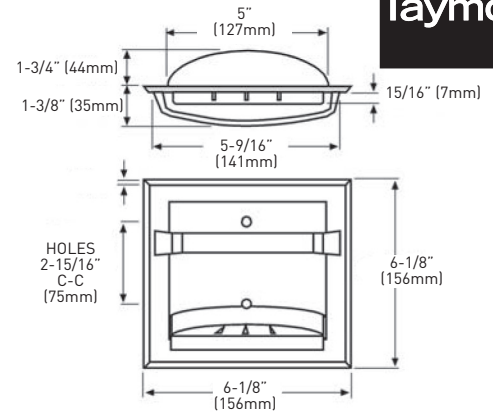
SCREW-IN

C = CONTRACTOR PACK

Taymor

RECESSED SOAP HOLDER WITH UTILITY BAR

- POSTS SECURELY RIVETED TO HOUSING
- COUNTERSUNK MOUNTING HOLES
- INCLUDES #10 x 2" (50.80mm) MOUNTING SCREWS
- WALL OPENING: 5-1/8" (130mm) x 5-1/8" (130mm)
- UTILITY BAR
- CONSTRUCTION: DIECAST STAINLESS STEEL #4 IN GENERAL PURPOSE FINISH
- SOAP HOLDER
- INCLUDES A REMOVABLE PLASTIC SOAP TRAY WITH MOUNTING SLOTS ON EACH SIDE

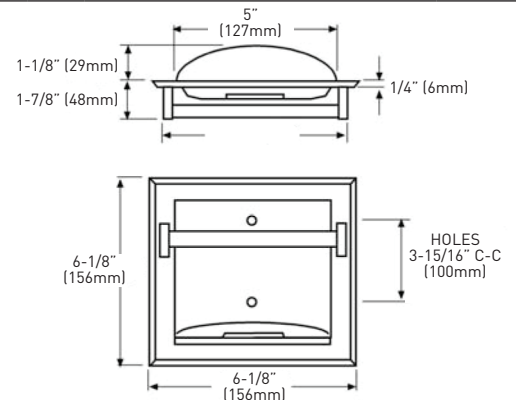


PKG	C26 POLISHED CHROME	CASE PACK
C	01-102S	50
R	02-D102S	5

C = CONTRACTOR PACK / R = RETAIL PACK

RECESSED SOAP HOLDER WITH UTILITY BAR

- POSTS SECURELY RIVETED TO HOUSING
- COUNTERSUNK MOUNTING HOLES
- INCLUDES #10 x 2" (50.80mm) MOUNTING SCREWS
- WALL OPENING: 5-1/8" (130mm) x 5-1/8" (130mm)
- UTILITY BAR
- CONSTRUCTION: CHROME PLATED ZINC ALLOY
- NON-REMOVABLE SOAP DISH

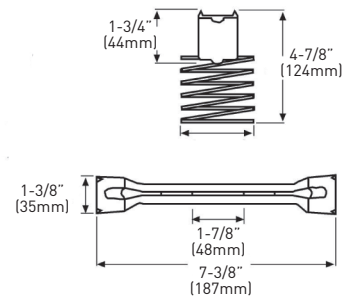


PKG	C26 POLISHED CHROME	CASE PACK
C	01-1862C	50
C	01-1862S	50

C = CONTRACTOR PACK

INSTALLATION CLAMP

- FOR ALL SCREW MOUNT RECESSED FIXTURES
- CONSTRUCTION: STAMPED STEEL
- 1-3/8" x 7-3/8" (35mm x 187mm)



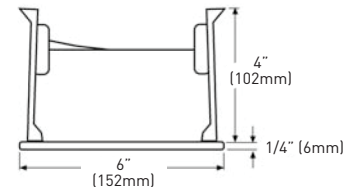
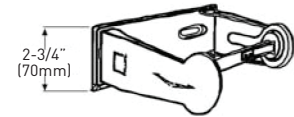
PKG	STAMPED STEEL	CASE PACK
R	02-D1003	10

R = RETAIL PACK

Taymor

SINGLE FIXED PAPER HOLDER

- EXPOSED SURFACE MOUNT APPLICATION
- INCLUDES #10 x 1" (25mm) MOUNTING SCREWS FOR SCREW-IN APPLICATION
- DRILLED HOLES 3-1/4" (83mm) CENTER TO CENTER
- LOCKING DEVICE PREVENTS REMOVAL OF ROLL UNTIL PAPER IS USED
- SPRING TENSION ARMS CONTROL PAPER FLOW

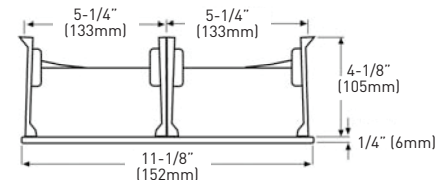
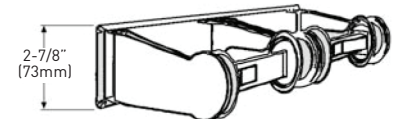
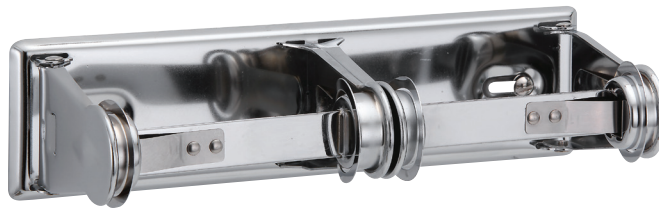


PKG	C26 POLISHED CHROME	CASE PACK
C	01-F1015	25

C = CONTRACTOR PACK

DOUBLE FIXED PAPER HOLDER

- EXPOSED SURFACE MOUNT APPLICATION
- INCLUDES #10 x 1" (25mm) MOUNTING SCREWS FOR SCREW-IN APPLICATION
- DRILLED HOLES 8-1/8" (206mm) CENTER TO CENTER
- LOCKING DEVICE PREVENTS REMOVAL OF ROLL UNTIL PAPER IS USED
- SPRING TENSION ARMS CONTROL PAPER FLOW

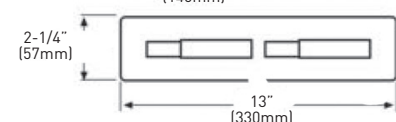
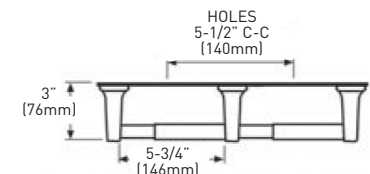


PKG	C26 POLISHED CHROME	CASE PACK
C	01-F1030	25

C = CONTRACTOR PACK

TWIN SURFACE MOUNT PAPER HOLDER

- EXPOSED SURFACE MOUNT APPLICATION
- INCLUDES #10 x 1" (25mm) MOUNTING SCREWS FOR SCREW-IN APPLICATION
- DRILLED HOLES 5-1/2" (140mm) CENTER TO CENTER
- GREY PLASTIC ROLLER



PKG	C26 POLISHED CHROME	CASE PACK
C	01-TW301S	20

C = CONTRACTOR PACK