

BILTMORE SERIES 900 Pressure Balancing Mixing Valves / Model 3

Product Specification

Description ■

Concealed, 4-port, pressure balancing water mixing valve for use in shower and tub/shower applications. Cast-brass body features diaphragm-type pressure balancing mechanism. Internal parts constructed of lime-resistant Delrin 500® for years of trouble-free service. Built-in adjustable temperature limit stop reduces the chance of thermal shock from overadjustment of handle. Cast-in checkstops reduce installation time. Unique construction allows for shallow wall installation — in as little as 51mm (2"). Back-to-back installation possible in only 102 mm (4") without costly cross-piping.

Specifications ■

Inlet Connections

Type G	1/2" NPT Inlets and Outlets
Type H	1/2" Sweat End Inlets and Outlets

Capacity 15 L/min @ 310 kPa
(4.6 gpm @ 45psi differential)

Maximum Static Pressure 862 kPa [125psig]

Maximum Inlet Temperature 82°C [180°F]

Handle Rotation Stop Standard and Adjustable

Shipping Weight Approx. 1.44 kg [3.2 lbs.]

Approval Standard CSA B125, ASSE 1016

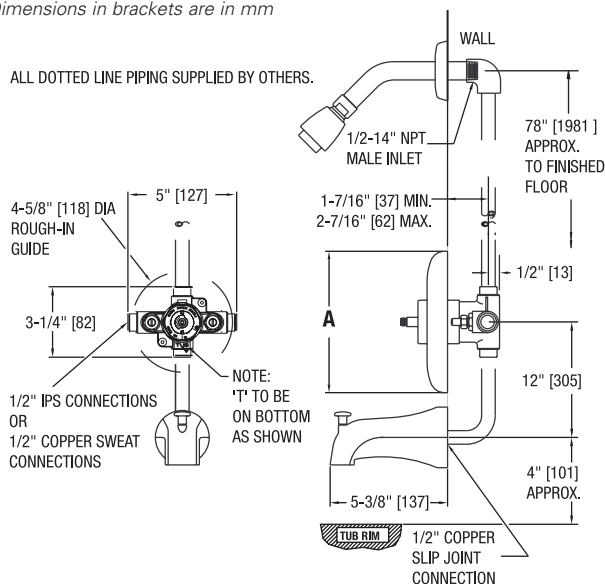
Listing ASSE 1016, IAPMO cUPC

Dimensions: Tub and Shower Installation ■

Note:

Dimensions are shown ±1/2"

Dimensions in brackets are in mm



Powers continues to strive for improved quality in product performance and, therefore, reserves the right of price, product or design modification without notice or obligation.

P902



Valve trim features:

- Polished stainless steel faceplate
- ADA-compliant metal lever handle for easy adjustment *

P905



Valve trim features:

- Chrome-plated ABS faceplate with color graphic insert for temperature indication
- Stylish ABS lever handle complies with ADA for easy adjustment *

P909



Valve trim features:

- Chrome-plated ABS faceplate with color graphic insert for temperature indication
- Stylish lucite handle enhances any installation

P910



Valve trim features:

- Chrome-plated ABS faceplate with color graphic insert for temperature indication
- ADA-compliant metal lever handle provides easy adjustment *

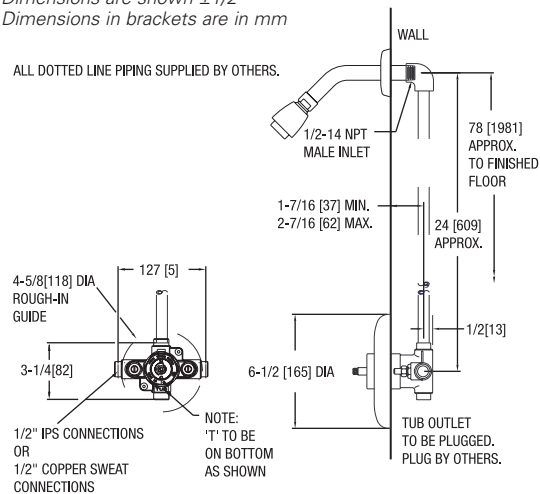


Dimensions: Shower Only Installation ■

Note:

Dimensions are shown ±1/2"


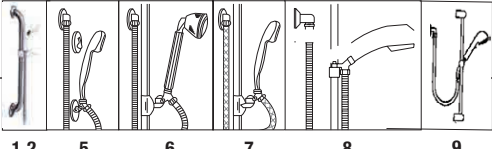
Dimensions in brackets are in mm



* **Note:** When used together, Powers lever handle and hand shower with glidebar meet ADA compliance standards. For complete ADA-required heights and other information on installing an ADA-compliant bathing system, refer to the ADAAG (Americans with Disabilities Act Accessibility Guidelines).

How To Specify ■

Shower and Tub/Shower Systems for Series 900 Valves

	<input type="checkbox"/>	<input type="checkbox"/>	<input type="checkbox"/>	<input type="checkbox"/>	<input type="checkbox"/>	<input type="checkbox"/>	<input type="checkbox"/>	<input type="checkbox"/>	<input type="checkbox"/>	<input type="checkbox"/>	
Order Code											
Valves See front page for selection of valve order code											
Showerheads, Arm and Flange <i>Below showerheads include arm and flange:</i>											
Economizer, Chrome-Plated ABS.....	J1										
Standard, Chrome-Plated Brass.....	K1										
Deluxe, Chrome-Plated Brass.....	M1										
Low Flow Shower (1.5 gpm), Arm & Flange.....	G1										
Low Flow Shower (1.5 gpm), Arm & Flange.....	H1										
Arm and Flange Only (no showerhead).....	O1										
Economizer, Arm & Flange & Hi-Temp Shutoff.....	J4										
Standard Arm & Flange & Hi-Temp Shutoff.....	K4										
Deluxe Arm & Flange & Hi-Temp Shutoff.....	M4										
Low Flow (1.5 gpm) Shower, Arm & Flange & Hi-Temp Shutoff.....	G4										
Low Flow (1.5gpm) Shower, Arm & Flange & Hi-Temp Shutoff.....	H4										
Tub Spouts											
Non-Diverter, Chrome-Plated 1/2" IPS.....	R										
Diverter, Chrome-Plated 1/2" IPS.....	S										
Diverter, Chrome-Plated 1/2" Slipfit.....	U										
											
Hand Shower Systems											
24" Chrome ADA Wall Grab Bar System.....	1										
36" Chrome ADA Wall Grab Bar System.....	2										
Deluxe, Metal Hose, 30" Slide Bar.....	3										
Professional, Vinyl Hose, 30" Slide Bar.....	4										
Standard, Metal Hose, Two Wall Hooks.....	5										
Deluxe, Metal Hose, 24" Slide Bar.....	6										
Professional, Vinyl Hose, 24" Slide Bar.....	7										
Standard Plus, Metal Hose, 24" Slide Bar.....	8										
European, Metal Hose, 23" Slide Bar.....	9										
Low Flow (1.5 gpm) Metal Hose, 30" Glide Rail.....	L										
Professional, Metal Hose, 30" Glide Rail.....	N										
											
Miscellaneous Accessories											
Vacuum Breaker, Elevated, Chrome-Plated.....	V										
Vacuum Breaker, In-Line.....	W										
Diverter, Concealed, Metal Handle, 1/2" Sweat.....	Y										
Diverter, Concealed, Deluxe ABS Handle, 1/2" Sweat.....	A										
Diverter, Concealed, Deluxe Metal Handle, 1/2" Sweat.....	B										
Diverter, Exposed, Showerhead Type.....	Z										

ENGINEERING APPROVAL

Project: _____
 Contractor: _____
 Architect/Engineer: _____

POWERS™

A Watts Water Technologies Company



ISO 9001-2008
 CERTIFIED

USA: Phone: 1.800.669.5430 • Fax 1.847.229.0526 • www.powerscontrols.com
 Canada: Phone: 1.888.208.8927 • Fax 1.888.479.2887 • www.powerscontrols.ca