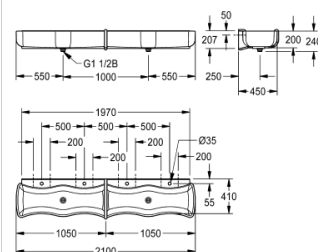


WASH AND PLAY TROUGH FOR CHILDREN: SANW205

SANW205 | 2000103057

ARTICLE GROUP : **SANW200++** | ARTICLE FAMILY : **Washtroughs** | PRODUCT GROUP : **Wash basins & Washtroughs** |
MODEL RANGE : **MIRANIT**



WASHINO Children's Wash-and-Play Trough made of MIRANIT resin-bonded mineral material, with a smooth, pore-free surface (temperature-resistant up to 80°C). Alpine white colour. Wave-shaped basins with reduced extension to increase accessibility to the tap, large outer radii of basins to minimise risk of injury, large inner radii facilitate easy cleaning. Tap landing with a tap hole for each wash place. Waste and overflow valve DN 40 x 120 mm implemented as a standpipe. Integral back panel for fixing. Mounting material included.

4 wash places

TECHNICAL DATA

Gross weight	118.00 kg
Material	mineral material
Material code	Miranit
Net weight	104.00 kg
Number of waste holes	2
Overall depth	470.00 mm
Overall height	240.00 mm
Overall width	2,100.00 mm
Rear upstand	no
Splash back	yes
Number of tap holes	4
Tap ledge	yes
Type of mounting	WALL-MOUNTING
Type of waste kit	1 1/2" duplex waste with standpipe
Number of wash places	4
Waste hole position	Centre
Waste kit included	No
Waste size	DN 40
Product code	203.0000.178