



The Sanicondens Best is a pump used to **neutralize and pump condensate** from **condensing boilers, HVAC systems, water heater systems, etc.**
The Sanicondens Best will pump condensate waste up to **15 feet in height and/or 150 feet away** from a soil stack.

- Discharges the condensate waste through a $\frac{3}{8}$ " vinyl tube. A non-return valve is included on the discharge connection provided with the system.
- Comes with provisions for a **ready-to-wire connection to an external overflow switch** that will shut down the appliance or alert the consumer in the event of overflow. It also includes all necessary hardware for ease of installation; **20 ft. of vinyl tubing, inlet adapter, discharge adapter.**
- Discharges **condensate from a condensing boiler or other condensate producing fixtures.**
The condensate will drain into the system via **four 1" inlets located on top of the enclosure.**
- Comes equipped with a **built-in neutralizer to raise pH levels** for harsh HVAC applications. Neutralizing granules come included with the condensate pump.



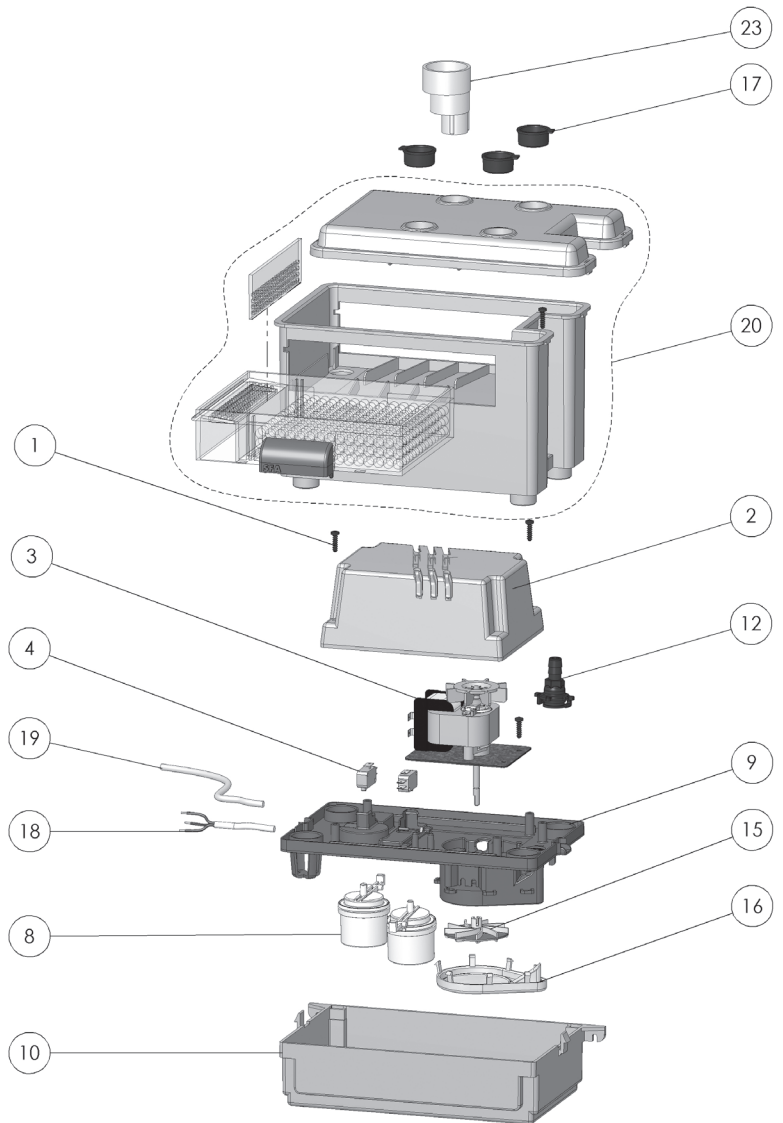
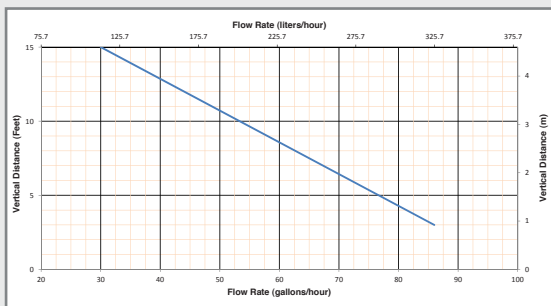
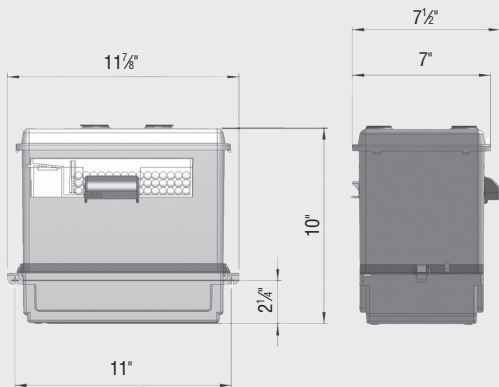
TECHNICAL SPECIFICATIONS

Pump type: Condensate pump
Electrical: 120 V – 60 Hz / 1.5 Amps (Max)
Motor: 1/30 HP oil-filled thermally protected motor
Operating Temperature: 160°F Max.
Power cord length: 61½ inches
Noise level: ≤ 44 dBA (Lp) (measured at 3 ft.)





Discharge pipe diameter: $\frac{3}{8}$ "
 Discharge rate at 15 ft: 30 GPH
 Discharge rate at 3 ft: 86 GPH
 Normal running time: 3-5 seconds (short bursts)
 Capacity: 0.55 gallon
 Inlets: 1" (top)
 Method of activation: Float/microswitch
 Weight: 8 lbs.
 Certifying agencies: CSA (IPC, NSPC)
 Recommended accessories: Neutralizing granules (Part# 042)
 Connections: Condensing boiler, HVAC systems,
 air conditioners

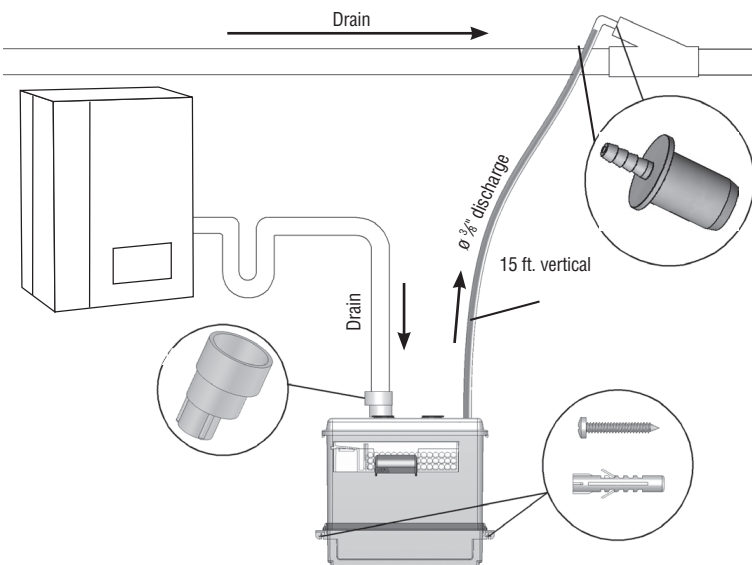


PLEASE CALL US TOLL-FREE AT 800-571-8191 (US) / 800-363-5874 (CDN)
 TO PURCHASE PARTS REFERENCED ABOVE

2 IN 1 CONDENSATE PUMP WITH BUILT-IN NEUTRALIZER FOR HARSH HVAC APPLICATIONS

Neutralizing agent (Part# 042) is used to **raise the pH level** from condensate being produced by condensing boilers, air conditioners, etc.

The two quart capacity condensate pump comes equipped with **all the necessary hardware for easy installation**. It can be installed on top of flat surface or wall mounted.



FOR ADDITIONAL TECHNICAL QUESTIONS, PLEASE CALL 800-571-8191