

## General

This normally open, single-seated, high pressure valve provides proportional control of hot and/or cold water in unit air conditioners and fan coil units.

## Features

- Small size permits installation where space is limited.
- Forged brass, straight-through body with end connections threaded for 45 degree SAE flare fitting nuts.
- Spring-loaded, self-adjusting, Buna-N "V"-ring packing is replaceable without shutting system down.
- High temperature rolling diaphragm actuator (aluminum cover) and high temperature plastic diaphragm retaining cup with integral air connection for 1/4 in. (6 mm) OD plastic tubing.
- Integral seat and brass plug with removable composition disc provides equal percentage flow.
- Stainless steel stem, 3/16 in. (5 mm) diameter.



## Specifications

### MODEL

VP527A: Normally open, high pressure water valve.

### BODY SIZE

3/8 in. nominal, 1/2 O.D. copper tubing.

### CAPACITY INDEX

.63, 1.0 or 1.6 Cv.

### BODY PRESSURE RATING

250 psi (1720 kPa) maximum.

### CONTROLLED MEDIUM TEMPERATURE

35 to 250 F (2 to 121 C).

### CLOSE-OFF RATINGS

Refer to Figure 1.

### MAXIMUM SAFE AIR PRESSURE

30 psi (205 kPa).

### OPERATING RANGE

2 to 5 or 3 to 10 psi (15 to 35 or 20 to 70 kPa).

### MAXIMUM DIAPHRAGM TEMPERATURE

230 F (110 C).

### DIMENSIONS

Refer to Figure 2.

### FITTINGS (must be ordered separately)

Standard flare nuts. Order from your usual supplier or from either:

Parker-Hannifin Corp.  
Brass Products Division  
300 Parker Drive  
Otsego, MI 49078  
(Specify Parker No. 41-FS 45 degree SAE short-length flare nut, OD tubing size and quantity required.)

or

Imperial-Eastman Corp.

6300 W. Howard St.

Chicago, IL 60648

(Specify Imperial No. 41-FS 45 degree  
SAE short-length flare nut, OD tubing  
size and quantity required.)

## ACCESSORIES

Position Indicator - 14001101-001.

Vandalism Shield: 14003648-001 (Cover  
assembly with metal 1/8-NPT air connec-  
tions).

## WHEN ORDERING, SPECIFY

1. Model Number
2. Accessories

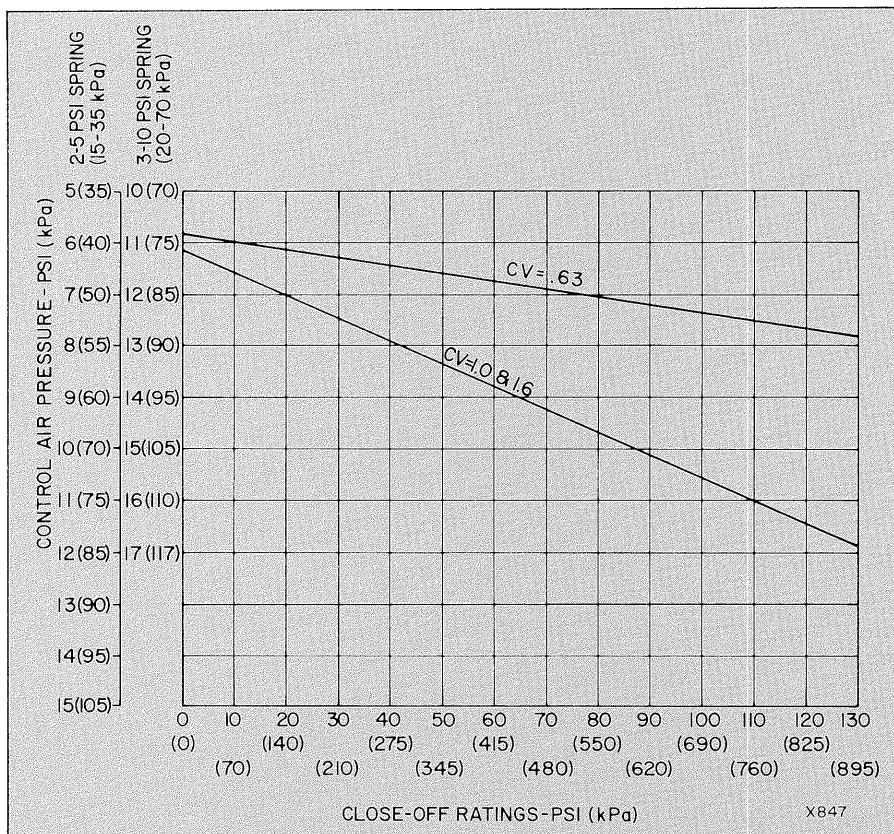


FIG. 1. CLOSE-OFF RATINGS AT VARIOUS CONTROL AIR PRESSURES

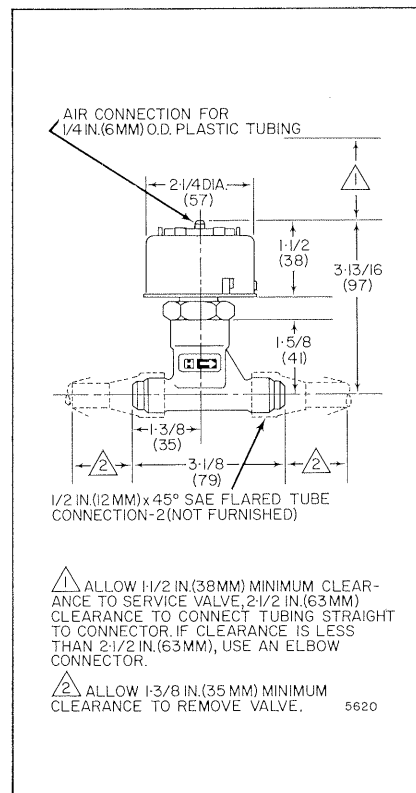


FIG. 2. VP527A DIMENSIONS IN INCHES (MILLIMETERS)

## Typical Operation

An increase in control air pressure moves the valve stem toward the closed position, modulating flow through the valve.

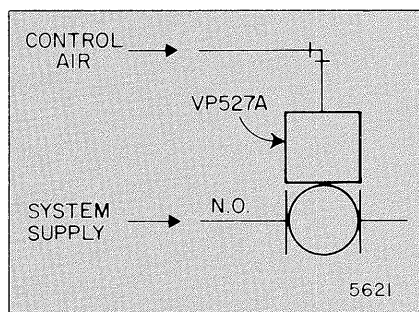


FIG. 3. VP527A TYPICAL OPERATION