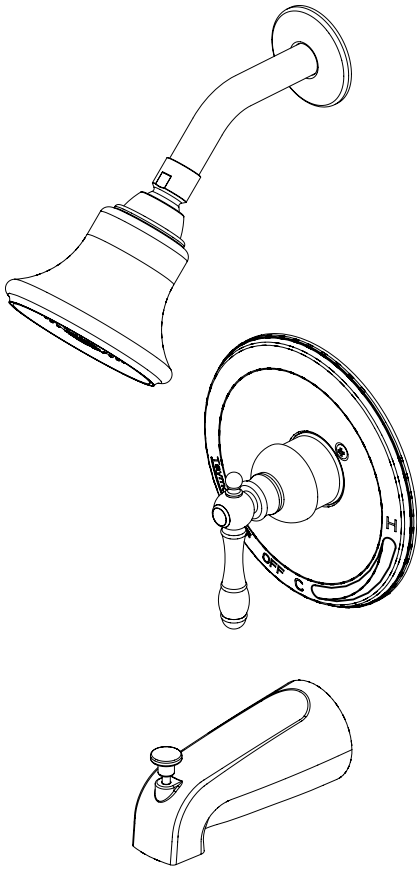




INSTRUCTIONS

SINGLE HANDLE TUB & SHOWER FAUCET 06-9504AS 06-9504BRN



TOOLS REQUIRED

- Pipe wrench
- Basin wrench
- Crescent wrench
- Teflon tape
- Plumber putty
- Screwdriver
- Braided supply lines
- Flashlight
- Safety goggles



Maintenance

Your new Tub & Shower faucet is designed for years of trouble-free performance. Keep it looking new by cleaning it periodically with a soft cloth. Avoid abrasive cleaners, steel wool and harsh chemicals as these will dull the finish and void your warranty.

© REGISTERED TRADEMARK OF TAYMOR INDUSTRIES LTD.
VANCOUVER, BC V3M 6K8 • TORONTO, ON M5J 2R1

TROUBLE-SHOOTING

If you've followed the instructions carefully and your faucet still does not work properly, take these corrective steps.

PROBLEM

Leaks underneath handle.

CAUSE

Bonnet (#9) has come loose or O-Ring (#11) on cartridge (#13) is dirty or twisted.

ACTION

Tighten the bonnet (#9). Clean or replace O-Ring (#11).

PROBLEM

Water will not shut off completely.

CAUSE

Rubber valve seat (#15) is dirty or broken.

ACTION

Remove handle (#1-#5) and cartridge (#13) to check the rubber valve seat (#15). Clean or replace it.

PROBLEM

Water temperature can not be adjusted by limiting device, or no hot or cold water.

CAUSE

Dirty spool housing.

ACTION

Turn off water supply. Take off seats and springs (#14 & #15) from the spool housing (#16) and clean with a brush and vinegar and water for both parts.

ADJUSTING WATER TEMPERATURE ON PRESSURE BALANCE SINGLE HANDLE TUB & SHOWER FAUCETS

STEP 1

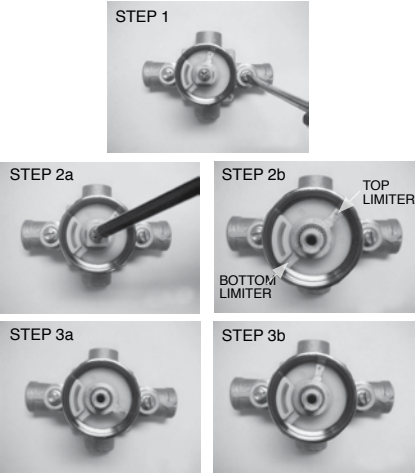
- Make sure faucet is in the "off" position (rotate handle (#1) clockwise until it stops).
- Make sure the valve stops (#17) are completely opened. To do this, rotate the screw driver indentation counter-clockwise until they stop. At this point, check for drips and hammering.

STEP 2

- Rotate handle counterclockwise slowly until there is water coming out of the spout (#21). Feel the temperature of the water. Rotate the handle even further until there is the slightest change in temperature. Once you feel a change, proceed to step 3. The limiter needs to be adjusted.
- Unscrew screw on top of cartridge (#13). Remove plastic cover.
- Using a pointed tool (pen or small flat head screw driver), remove rubber o-ring holding limiters in place.

STEP 3

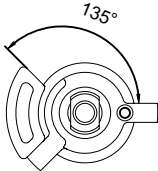
- To change the temperature of the water, the limiters must be adjusted. The limiters have teeth that ride the stem. Do not remove the bottom limiter.
 - a) If the maximum hot water is not hot enough: Adjust the position of the top limiter placing it so that the gap is closer to the bottom limiter. This will increase the turning action and, in turn, increase the amount of hot water flowing into the valve. The closer the gap of the limiters, the hotter the maximum water temperature will be.
 - b) If the maximum hot water is too hot: Adjust the position of the top limiter placing it so that the gap is further away to the bottom limiter. This will decrease the turning action and, in turn, decrease the amount of hot water flowing into the valve. The wider the gap of the limiters, the less hot the maximum water temperature will be.
- This adjustment may need to be done several times before the unit meets your temperature comfort level to your satisfaction.



STEP 4

- Reassemble the unit, replacing all parts as they were removed.

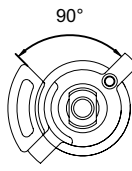
Hot water adjustment



high temperature setting

FIG. 1

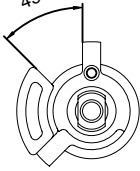
Position in the middle is recommended



average temperature setting

FIG. 2

Cold water adjustment



low temperature setting

FIG. 3

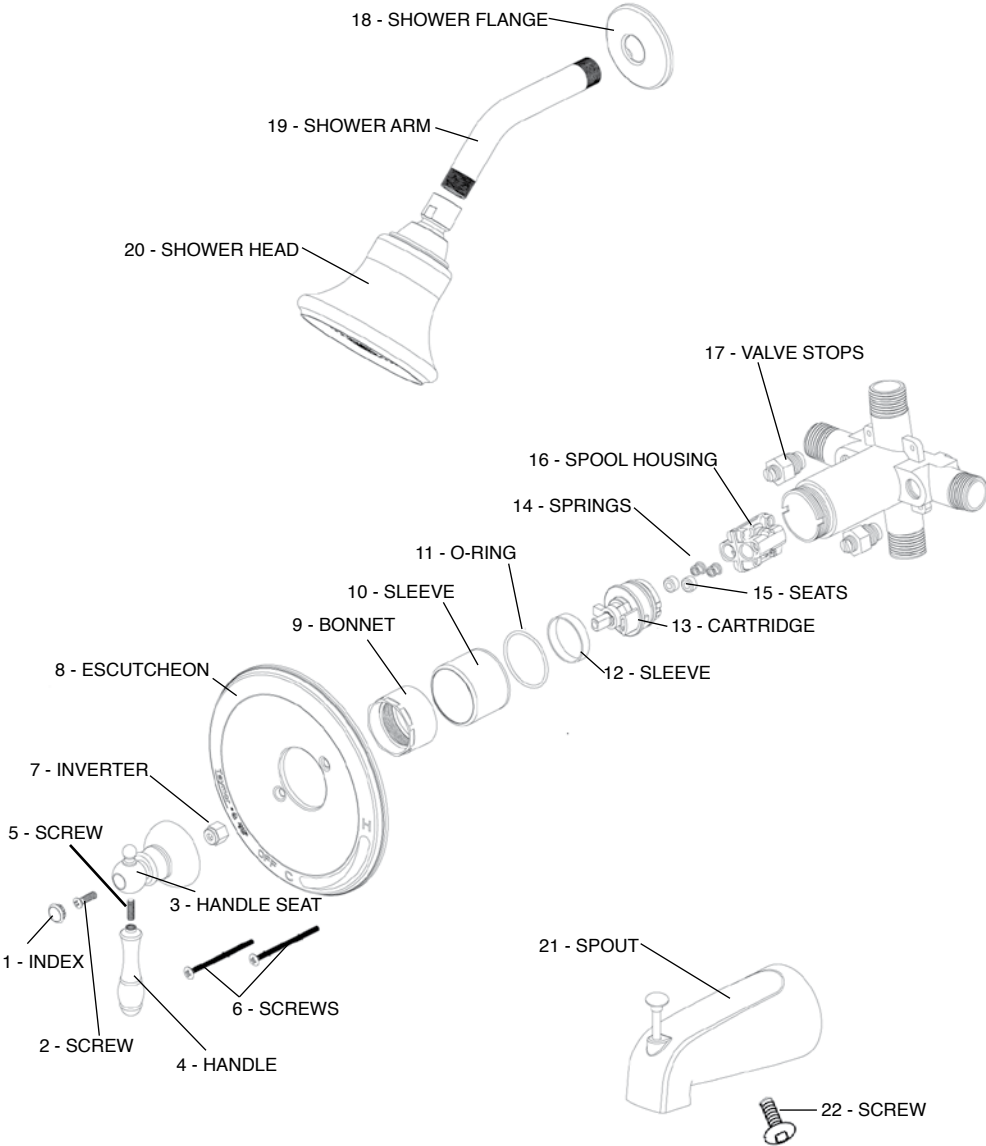
CUSTOMER SERVICE

WEST 1-800-267-4774

EAST 1-800-387-7064

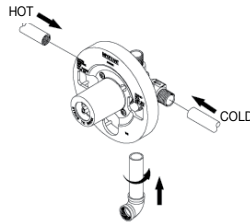
www.taymor.com

INSTALL FAUCET



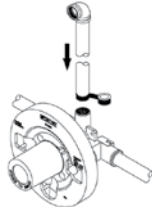
1

- Recommended component locations:
A - Shower and/or spout outlet hole: 1 1/4" diameter.
B - Valve access hole: 3 3/4" min. - 5 9/10" max. diameter.
C - Valve centerline to finished wall: 2 1/8" to 3" max.
CAUTION: Allow at least 2" between tub outlet and tub rim.



2

- SHUT OFF WATER SUPPLIES & CONNECT HOT AND COLD SUPPLY INLETS (A OR B)
A - Apply Teflon tape onto thread and connect water supply tube to valve assemblies. Make sure that the valve's hot and cold inlets are on an accurate horizontal plane after installation.
B - Installation of water supply tube without thread. Connect the water supply tubes to the water inlets on the valve body, joining the two parts by soldering them together. Make sure that valve's hot and cold inlets are on an accurate horizontal plane after the installation.



3

- FOR SHOWER HEAD INSTALLATION
Apply Teflon tape on all pipe threads. Install elbow at one end. Connect other end to shower diverter.

4

- Insert wall end of shower arm (#19) into shower flange (#18) and connect top outlet to shower arm (#19) with proper fittings. Do not overtighten showerhead (#20).

5

- FOR TUB SPOUT INSTALLATION
A - Install pipe nipple for spout and it should extend past the finished wall for the installation of the tub spout.
B - Insert the tub spout (#21) into the nipple, then tighten the screw (#22).

6

- Before installing escutcheon (#8), remove the plastic cap from plaster guard by twisting cap clockwise.

7

- Install escutcheon (#8) onto valve then screw in escutcheon and install handle assembly (#1-#5).