

BRENTWOOD

06-9504AS / 06-9504BRN
TUB & SHOWER FAUCET

06-9504T / 06-9504BRNT
TUB & SHOWER TRIM SET

06-9504TSO / 06-9504BRNTSO
SHOWER ONLY TRIM SET

Taymor
®



AGED BRONZE

FEATURES

- PRESSURE BALANCED SINGLE LEVER HANDLE AND SINGLE SETTING, ANTI-CLOG SHOWER HEAD
- AVAILABLE IN POLISHED CHROME AND AGED BRONZE
- WASHERLESS CARTRIDGE
- SHOWER HEAD MAXIMUM FLOW RATE: 2.0 GPM/ 7.6 LPM @ 80 PSI
- TUB SPOUT MINIMUM FLOW RATE: 2.4 GPM/9.0 LPM @ 20 PSI
- SLIP-FIT SPOUT
- FACTORY PRESSURE TESTED
- CSA CERTIFIED / WaterSense® CERTIFIED



POLISHED CHROME

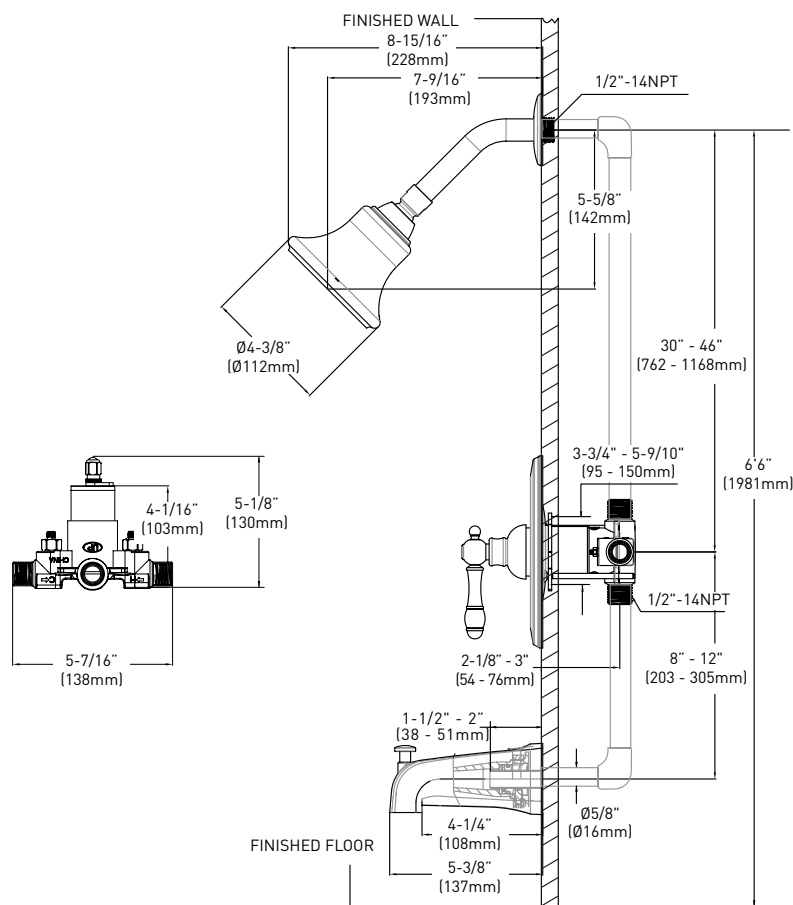
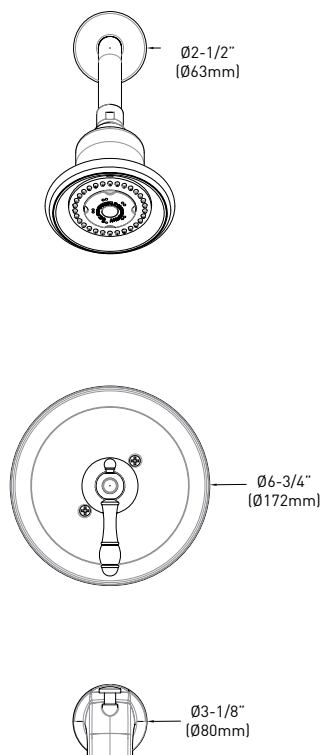


BRENTWOOD

06-9504AS / 06-9504BRN TUB & SHOWER FAUCET

06-9504T / 06-9504BRNT TUB & SHOWER TRIM SET

06-9504TSO / 06-9504BRNTSO SHOWER ONLY TRIM SET



CRITICAL DIMENSIONS NOT TO SCALE

CONSTRUCTION

- METAL CONSTRUCTION WITH VARIOUS FINISHES IDENTIFIED BY SUFFIX
- BRASS VALVE BODY

VALVE

- VALVES: 06-V0002, 06-V0003, 06-V0004, 06-V0005, 06-V0006, 06-V0007, 06-V0008, 06-V0009
- ADJUSTABLE TEMPERATURE LIMIT STOP TO CONTROL MAXIMUM HOT WATER TEMPERATURE
- PRESSURE BALANCING MECHANISM MAINTAINS SELECTED DISCHARGE TEMPERATURE TO $\pm 2^\circ$
- BACK-TO-BACK INSTALLATION CAPABILITY

OPERATION

- LEVER STYLE HANDLE WITH TEMPERATURE INDICATOR ON THE ESCUTCHEON

WATER-CONTROL MECHANISM

- CARTRIDGE
- ROTATING CYLINDER TYPE WITH STAINLESS STEEL PLATE AND NON-METALLIC SEATS

FLOW

- SHOWERHEAD IS LIMITED TO 2.0 GPM [7.6 L/MIN.]

CODES/STANDARDS APPLICABLE

- ASME A112.18.1/ CSA B125.1
- ASSE 1016

GUARANTEE

- LIMITED LIFETIME GUARANTEE AGAINST DEFECTS IN MATERIAL AND WORKMANSHIP TO ORIGINAL CONSUMER PURCHASER
- 5 YEAR WARRANTY IF USED IN INDUSTRIAL, COMMERCIAL AND BUSINESS INSTALLATIONS



MEETS ADA STANDARDS

	DESCRIPTION	AGED BRONZE			POLISHED CHROME			CASE QTY.
		TUB & SHOWER FAUCET	TUB & SHOWER TRIM SET	SHOWER ONLY TRIM SET	TUB & SHOWER FAUCET	TUB & SHOWER TRIM SET	SHOWER ONLY TRIM SET	
	PRESSURE BALANCED SINGLE LEVER HANDLE TUB & SHOWER FAUCET AND SINGLE SETTING SHOWER HEAD WITH ANTI-CLOG TIPS	06-9504BRN 1/2" COPPER/MALE NPT & INTEGRAL STOPS	06-9504BRNT	06-9504BRNTSO	06-9504AS 1/2" COPPER/MALE NPT & INTEGRAL STOPS	06-9504T	06-9504TSO	4