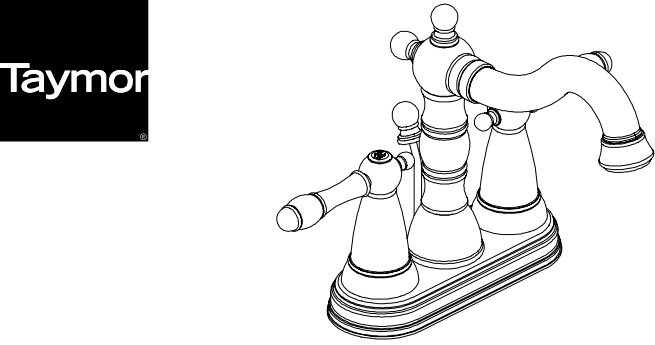


INSTALLATION INSTRUCTIONS

BRENTWOOD 06-4804P / 06-4804PBRN TWO HANDLE LAVATORY FAUCET



THIS FAUCET MEETS OR EXCEEDS THE FOLLOWING STANDARDS:
ASME A112.18.1/CSA B125.1 and NSF-61



THANK YOU FOR PURCHASING THIS TAYMOR PRODUCT. ALL TAYMOR PRODUCTS ARE CAREFULLY ENGINEERED AND FACTORY TESTED TO PROVIDE LONG TROUBLE-FREE USE UNDER NORMAL CONDITIONS.

1 HAVE BASIC TOOLS READY

RECOMMENDED TOOLS:



Your installation may require new supply lines. (Supply lines are not included.)



WARNING: READ ALL the instructions completely before beginning. READ ALL warnings, care and maintenance information.

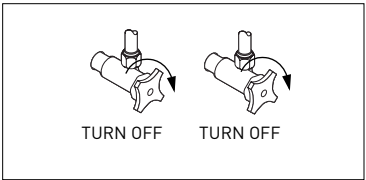
Taymor recommends calling a professional if you are uncertain about installing this product!

This product should be installed in accordance with all local and provincial plumbing and building codes.

Need Help? Please call our toll-free Customer Support line at
(WEST) 1-800-267-4774 (EAST) 1-800-387-7064 for additional assistance or service.

2 TURN OFF THE MAIN WATER SUPPLY

Locate water supply inlets and shut off water supply valves. These are usually found under the sink.

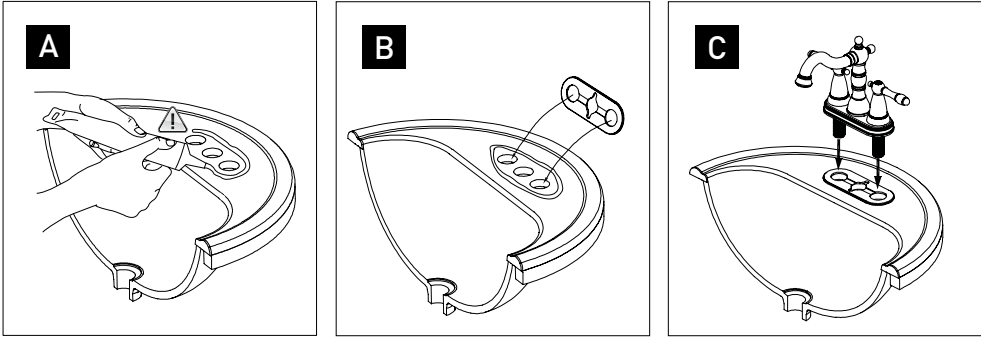


3 GASKET & FAUCET INSTALLATION

- A) Apply a bead of plumber's putty or silicone caulk around the sink openings.
B) Install the gasket over the three holes in your sink.
C) Install faucet shanks through the holes of the sink. Centre the faucet body on the sink.



Don't use plumber's putty on cultured marble or other composite sinks. Putty will discolour the sink.

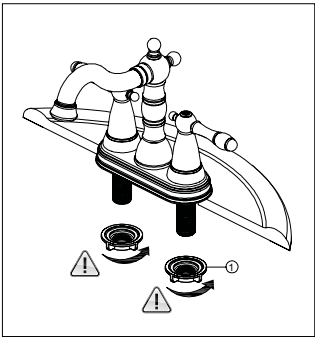


4 HAND TIGHTEN THE MOUNTING NUTS

From underneath the sink, hand tighten the mounting nuts. Tighten gently until snug and alternate from side to side to seat the faucet body evenly.



Don't over tighten



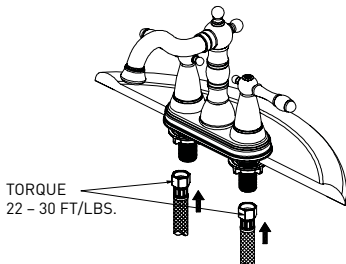
5 ATTACH THE HOT AND COLD SUPPLY LINES

Apply Teflon tape onto threaded ends of faucet inlets.

Connect water supply lines to faucet inlets. Hot water supply lines go into left inlet. Cold water supply lines go into right inlet. (Supply lines are not included).

FOR PLASTIC AND BRAIDED STAINLESS STEEL SUPPLY TUBES

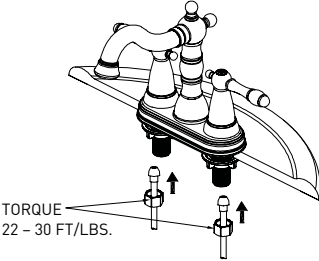
THESE SUPPLY TUBES HAVE INTEGRAL NUTS. SCREW THE NUT ONTO THE FAUCET INLET.



TORQUE
22 - 30 FT/LBS.

FOR 3/8" O.D. BALL-NOSE SUPPLY TUBES

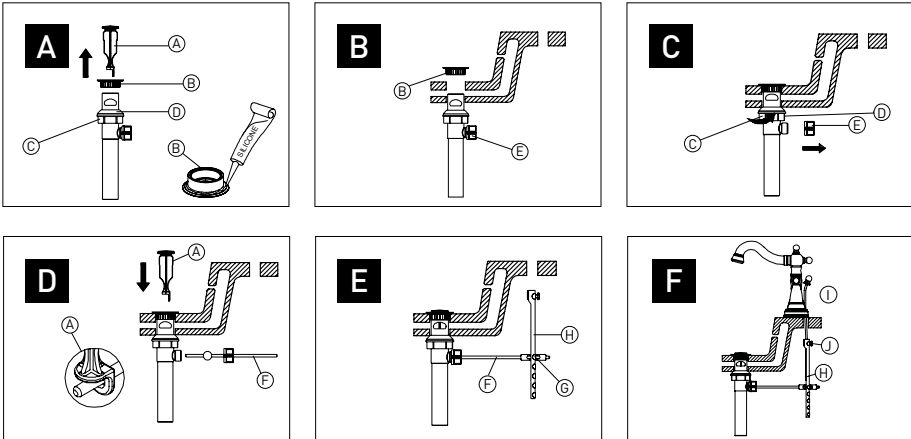
IF THE SUPPLY TUBE END HAS A BULBOUS SHAPE, USE THE SUPPLIED COUPLING NUTS.



TORQUE
22 - 30 FT/LBS.

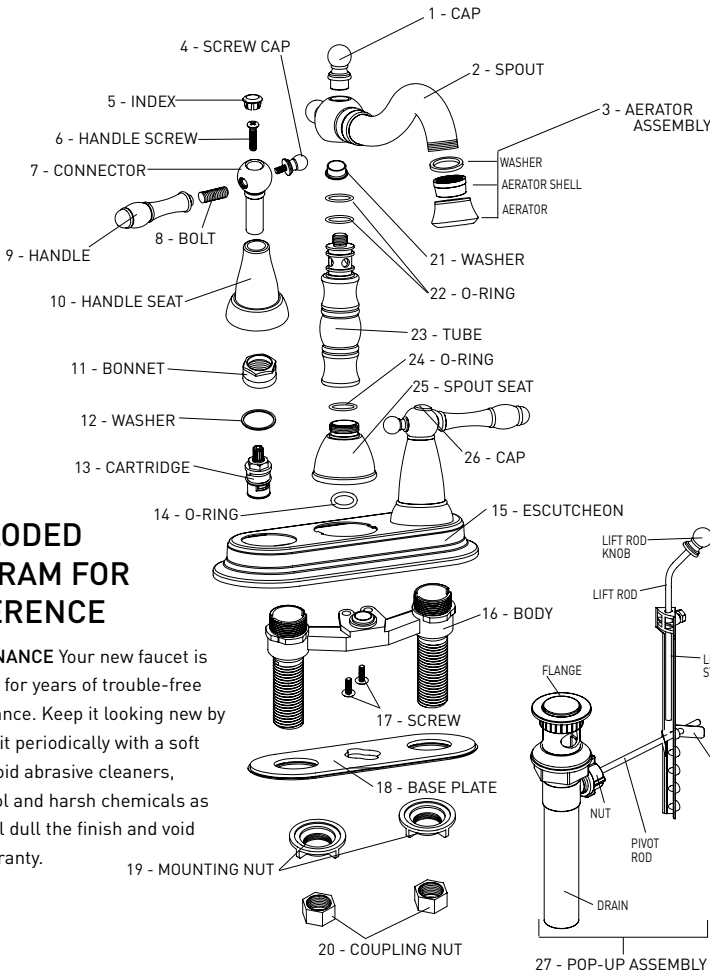
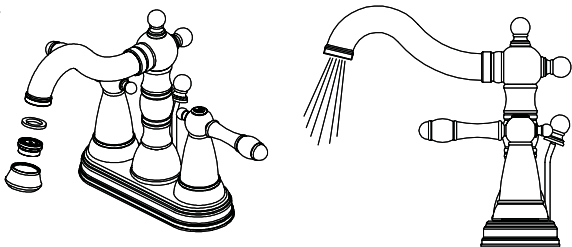
6 INSTALLING POP-UP DRAIN

- A) Remove pop-up plunger (A) and flange (B). Screw locknut (C) all the way down. Push gasket (D) down. Apply silicone to underside of flange (B).
B) Insert body into sink (from underneath). Screw flange onto body. Pivot hole (E) must face the back of the sink.
C) Tighten locknut (C) and gasket (D) but do not overtighten. Remove pivot ball retaining nut (E).
D) Slide pivot rod (F) into the eye of the pop-up plunger (A). Hand tighten retaining nut.
E) Slide pivot rod (F) through hole in spring clip (G), then through lever strap (H) and back through spring clip (G).
F) Insert lift rod (I) down through faucet body and then into lever strap (H). Tighten screw (J). Connect assembly to drain.



7 FLUSHING & AERATOR CLEANING

Remove the aerator by turning it counterclockwise. Remove the internal parts of the aerator by pushing them out with your fingers. Remove any debris. Turn on hot and cold water supplies. Turn faucet handles all the way on and run water through the spout for about a minute to remove debris. While water is running check all connections for leaks. Reassemble the aerator and screw it back into the spout hand tight.



8 EXPLODED DIAGRAM FOR REFERENCE

MAINTENANCE Your new faucet is designed for years of trouble-free performance. Keep it looking new by cleaning it periodically with a soft cloth. Avoid abrasive cleaners, steel wool and harsh chemicals as these will dull the finish and void your warranty.