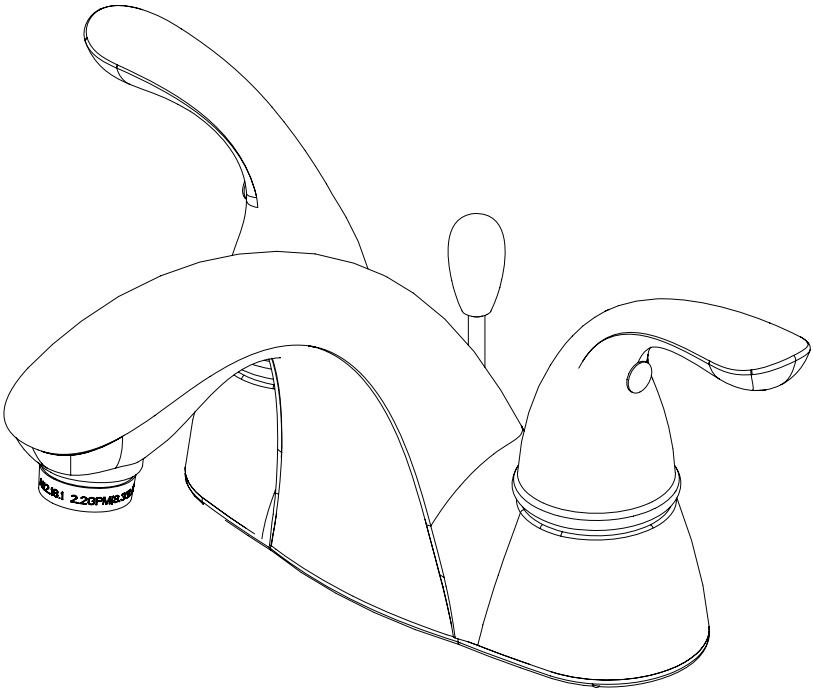




INSTRUCTIONS

TWO HANDLE BATHROOM FAUCET 06-4682P 06-4682PSN



TOOLS REQUIRED

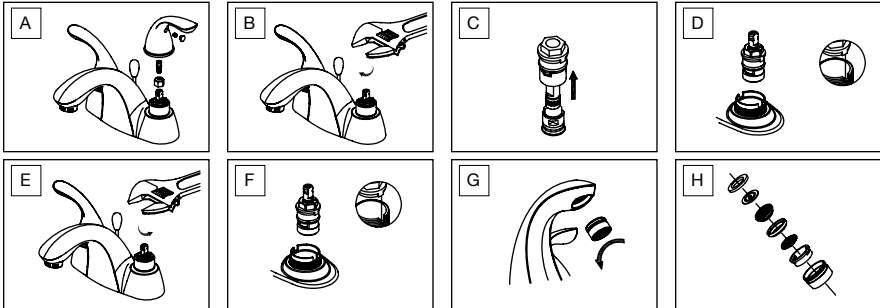
- Pipe wrench
- Basin wrench
- Crescent wrench
- Teflon tape
- Plumber's putty
- Screwdriver
- Braided supply lines
- Flashlight
- Safety goggles



Maintenance

Your new bathroom faucet is designed for years of trouble-free performance. Keep it looking new by cleaning it periodically with a soft cloth. Avoid abrasive cleaners, steel wool and harsh chemicals as these will dull the finish and void your warranty.

TROUBLE-SHOOTING



If you've followed the instructions carefully and your faucet still does not work properly, take these corrective steps.

PROBLEM

Leaks underneath handle.

CAUSE

Retainer nut has come loose or O-Ring on cartridge is dirty or twisted.

ACTION

1. Move the handle to the "off" position. Take the handle off using a standard screwdriver and remove the handle (#1-#4) (figure A).
2. Tighten the retainer nut (#8) by turning it clockwise (figure B). Move the cartridge stem to the "on" position. The leak should stop draining out from around the cartridge stem.
3. If the leak does not stop, shut off the water supply. Remove the retainer nut by turning it counter clockwise. Lift out the cartridge valve (#10) (figure C). Inspect the larger O-Ring on the cartridge bonnet and the smaller O-Ring on the cartridge stem. Remove any debris from the O-Rings. If either O-Ring is twisted, straighten it out. If either O-Ring is damaged, replace it.
4. Position the cartridge (#10) back to the faucet body (figure D). Make sure the wings on the two sides of the cartridge bonnet fit into the cuts on the two sides of the faucet body. Tightly screw the retainer nut onto the faucet body.
5. Re-install the handle.

PROBLEM

Water does not completely shut off.

CAUSE

Rubber valve seat is dirty, stuck or broken.

ACTION

1. Shut off the cold water supply. If leakage stops, the problem is on the cold side. If leakage continues, the problem is on the hot side. Shut off the hot water supply to determine if both the cold and hot sides have a problem.
2. Remove the handle (#1-#4) on the problem side. Loosen the retainer nut (#8) by turning it counter-clockwise (figure E). Lift out the cartridge assembly (#10).
3. Inspect the larger O-Ring on the cartridge bonnet and the smaller O-Ring on the cartridge stem. Remove any debris from the O-Rings. If either O-Ring is twisted, straighten it out. If either O-Ring is damaged, replace it.
4. Re-position the cartridge back to the faucet body. Make sure that the wings on the two sides of the cartridge bonnet fit well into the cuts on the two sides of the faucet body (figure F). Tightly screw the retainer nut onto the faucet body.
5. Re-install the handle.

PROBLEM

Faucet leaks around aerator.

CAUSE

Aerator incorrectly fitted.

ACTION

1. Unscrew the aerator (#17) by turning it clockwise (Diagram G). Inspect the black rubber packing inside the aerator. The rubber packing should be flat.
2. Screw the aerator onto the spout end and tighten.

PROBLEM

Improper water pattern.

CAUSE

Aerator dirty or small parts inside aerator improperly installed.

ACTION

1. Remove the aerator (#17) from the spout end by turning it counter clockwise.
2. Gently flush the small parts inside the aerator to clear away any debris
3. Re-install the small parts as shown in the diagram (figure H). Metal screens must be flat and plastic supporter must be straight.
4. Screw the aerator onto the spout end and tighten.

CUSTOMER SERVICE

WEST 1-800-267-4774

EAST 1-800-387-7064

www.taymor.com

INSTALL FAUCET

- 1 Shut off water supply. Remove old faucet, taking care not to damage existing water lines. Clean surface in preparation for new faucet. Always wrap metal threads with Teflon tape before connecting water lines.

- 2 Place new faucet on the sink with hot to the left and cold to the right. From under the sink, thread mounting nuts (#16) onto faucet. Tighten mounting nuts.

- 3 Attach water supply lines: (Supply lines and fittings are not included)

A) Stainless Steel Braided Faucet Supply Tubes:

This is the simplest of all installations. If you are using stainless steel braided faucet supply tubes, this faucet requires one end of the supply tube to have a 1/2" female IPS connection. The other end of this supply tube must match the thread on the water supply fittings or shut off valve under your sink. Once you have identified the the required tube, carefully follow the manufacturer's installation instructions for each tube.

B) Ball Nose Flexible Supplies:

If you are using ball-nose flexible supplies to connect the faucet to water supply lines, slip coupling nut behind ball-nose of flexible supply tube. Ball nose coupling nut will go partially into IPS shank or fitting. Tighten coupling nut (DO NOT OVER TIGHTEN). Install opposite end according to manufacturer's instructions for both tubes.

- 4 Important: After installation is complete, remove aerator (#17). Turn on water supply and allow both hot and cold water to run for at least one minute each. While water is running, check for leaks. Replace aerator. Tighten nuts slightly to stop minor leaks. If problems persist, refer to trouble-shooting chart.

INSTALL POP-UP DRAIN

- 1 Remove stopper (#1) and flange (#2). Screw nut (#3) all the way down. Push gasket (#4) down.

- 2 Apply silicone to underside of flange (#1). Insert body (#2) into sink. Screw flange onto body. Pivot hole (#3) must face back of sink. Tighten nut/gasket (#4), clean off excess silicone.

- 3 Remove pivot nut (#1). Install horizontal rod (#2) and stopper (#3) as removeable (#4) or non-removeable (#5). Hand tighten pivot nut. Attach horizontal rod to strap (#6) using clip (#7).

- 4 Insert lift rod (#1) through faucet and into strap (#2). Tighten screw (#3). Connect assembly to drain.

© REGISTERED TRADEMARK OF TAYMOR INDUSTRIES LTD.
VANCOUVER, BC V3M 6K8 • TORONTO, ON M3J 2R1