

INSTALLATION INSTRUCTIONS



SAVER™ BATH DOOR MODEL: AM00495.400 SERIES

Thank you for selecting American Standard – the benchmark of fine quality for over 100 years. To ensure this product is installed properly, please read these instructions carefully before you begin. (Certain installations may require professional help.) Also be sure your installation conforms to local codes.

GENERAL INFORMATION

Please inspect the product immediately upon receipt for transit damage, missing packs/parts or manufacturing fault. Damage reported later cannot be accepted. Please handle the product with care avoiding knocks and shocks loading to all sides and edges of the glass.

NOTE: TEMPERED GLASS CANNOT BE DRILLED, CUT OR MODIFIED.

READ THE INSTRUCTIONS CAREFULLY

Familiarize yourself with all the parts as shown in the assembly drawing. The assembly drawing will also provide a helpful reference when relating the location of the various parts and how they are mounted.

Special care should be taken when drilling walls to avoid hidden pipes or electrical cables.

Note: This product is heavy and may require two people to install.

AFTERCARE INSTRUCTIONS

After use, your shower should be cleaned with soap and water. This is particularly important in hard water districts where insoluble lime salts may be deposited and allowed to build up. Cleaners of a gritty or abrasive nature should not be used. Care should be taken to avoid contact with strong chemicals such as organic solvents and strippers.

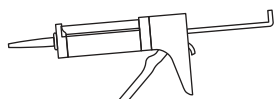
Glass cleaners can be used but with caution, if in doubt contact the manufacturer of the cleaner in question.

Please keep these instructions for aftercare and customer service details.

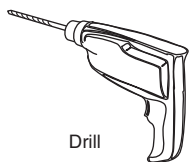
For problems please contact American Standard. Do not return to store.

SAVE FOR FUTURE USE

REQUIRED TOOLS AND MATERIALS



Caulking Gun & Caulking



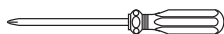
Drill



1/4" & 1/8" Drill Bits
#2 Square Drive Bit



Tape Measure



Phillips Screwdriver



Regular Screwdriver



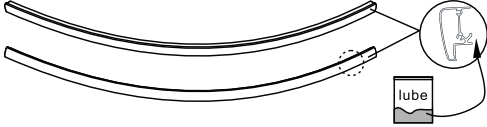


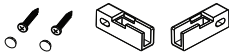

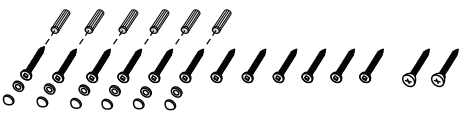




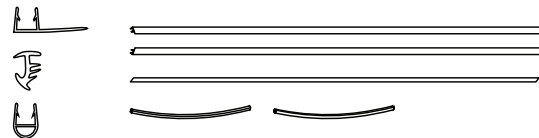

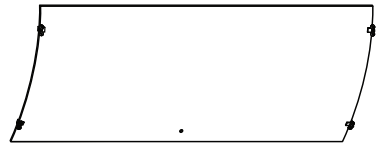
Hammer



Pencil

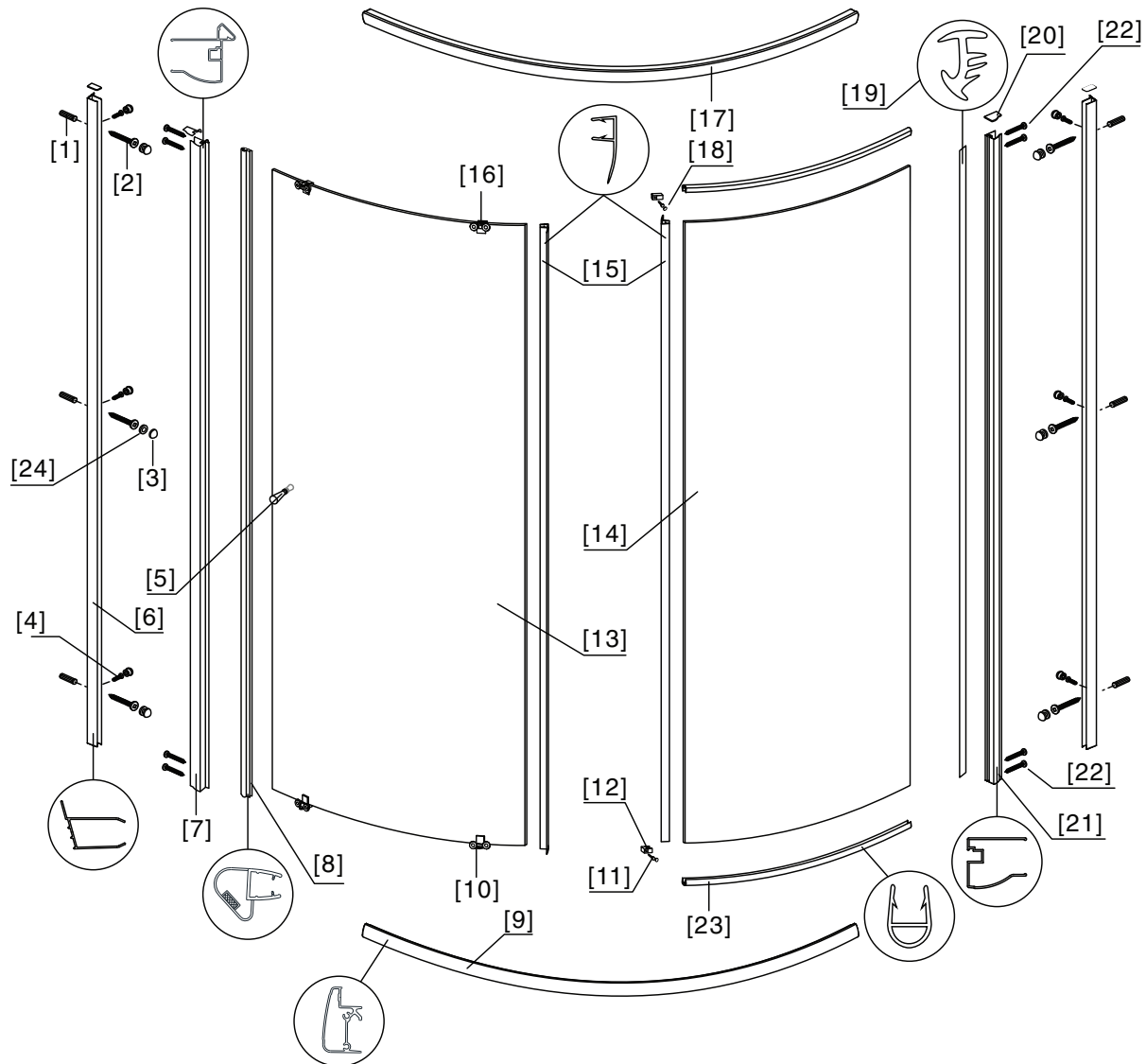


Level

BOX CONTENTS		
2x Horizontal Rails 1x Lube	➔	
1x Installation Instructions	➔	
1x Handle Set	➔	
2x Retaining Blocks 2x Screws M4x12 2x Screw Cover Caps	➔	
6x Profile Covers	➔	
6x Wall Plugs 12x Screws M4x35 2x Screws, Flat Head, M4x35 6x Screw Cover Caps 6x Cupped Washers	➔	
6x Screws M4x10 6x Screw Cover Caps 6x Cupped Washers	➔	
2x Wall Posts	➔	
2x Door Posts	➔	
1x Magnetic Seal	➔	
5x Water Deflectors	➔	
1x Fixed Glass Door Panel	➔	
1x Sliding Glass Door Panel	➔	

ASSEMBLY DRAWING

Fixed Right-hand Panel shown - See page 8 for Fixed Left-hand Panel



- [1] 6x Wall Plugs
- [2] 12x Screws M4x35
- [3] 24x Screw Cover Caps
- [4] 6x Screws M4x10
- [5] 1x Handle Set
- [6] 2x Wall Posts
- [7] 1x Door Post
- [8] 1x Magnetic Seal
- [9] 1x Bottom Horizontal Rail
- [10] 2x Bottom Rollers
- [11] 2x Screws M4x12
- [12] 2x Retaining Blocks

- [13] 1x Sliding Door Panel
- [14] 1x Fixed Door Panel
- [15] 2x Water Deflectors
- [16] 2x Top Rollers
- [17] 1x Top Horizontal Rail
- [18] 2x Screw Cover Caps
- [19] 1x Water Deflector
- [20] 6x Profile Covers
- [21] 1x Door Post
- [22] 2x Flat Head Screws M4x35
- [23] 2x Water Deflectors
- [24] 12x Cupped Washers

INSTALLATION NOTES

This unit is best installed by two people.

Cover drain with tape prior to installation to prevent the loss of small parts.

Unpack your unit carefully and inspect for freight damage. Lay out and identify all parts using instruction sheet as a reference. Before discarding the carton check to see that no small hardware parts have fallen to the bottom of the box. If any parts are damaged or missing refer to the description noted in the instructions when inquiring about replacements.

Handle the glass panels carefully and protect the edges. Although tempered glass is very resistant to breakage the glass can still break if unequal pressure is applied during installation and the sharp corners of the panel can damage tile and flooring surface.

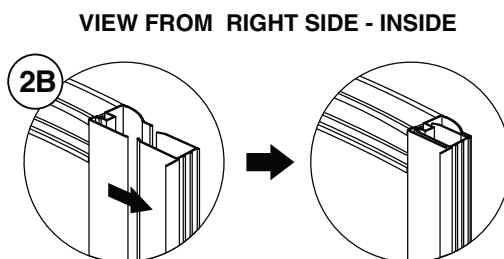
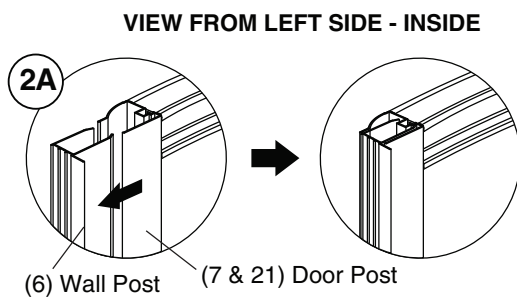
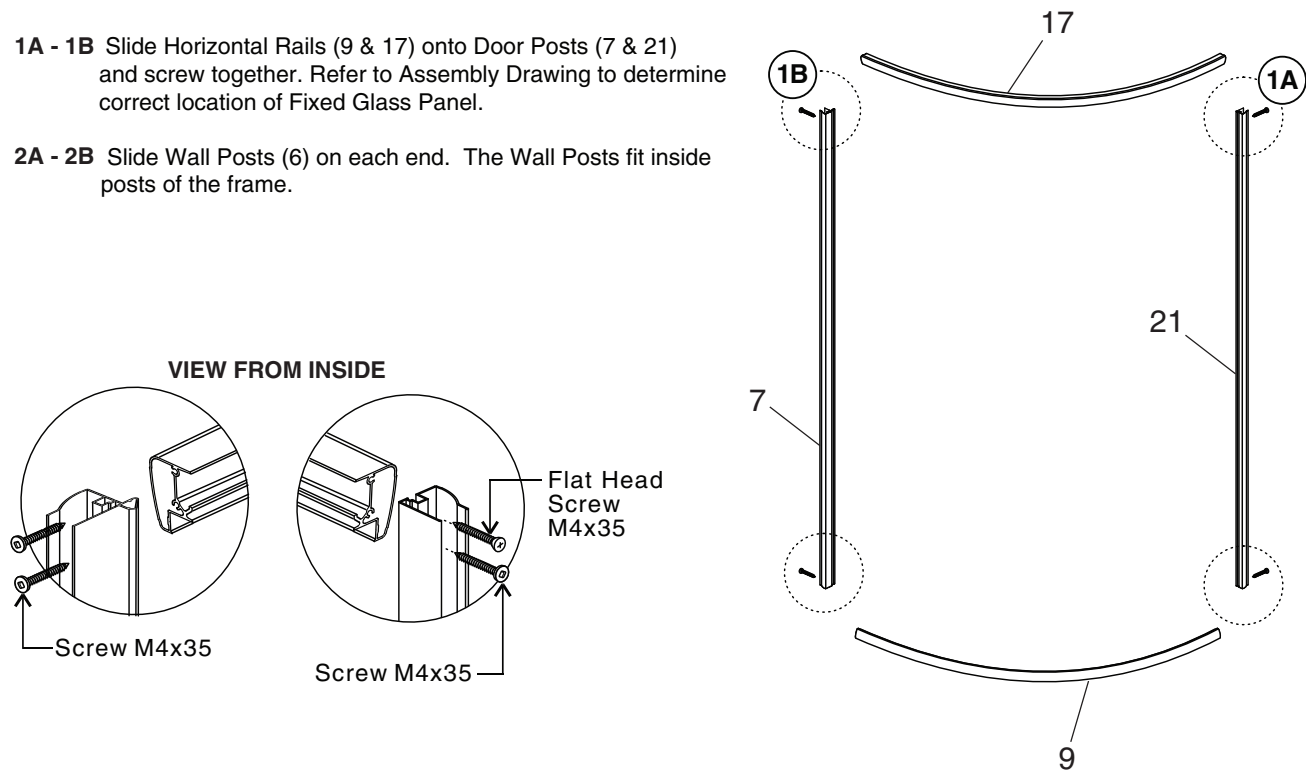
Be sure to wear safety glasses whenever drilling or cutting. When drilling holes in ceramic tile or marble use a center punch and hammer to carefully break the glazed surface. This will prevent skidding when drilling.

NOTE: TEMPERED GLASS CANNOT BE DRILLED, CUT OR MODIFIED.

1 ASSEMBLE FRAME - REFER TO ASSEMBLY DRAWING

1A - 1B Slide Horizontal Rails (9 & 17) onto Door Posts (7 & 21) and screw together. Refer to Assembly Drawing to determine correct location of Fixed Glass Panel.

2A - 2B Slide Wall Posts (6) on each end. The Wall Posts fit inside posts of the frame.



2 FITTING FRAME ASSEMBLY INTO OPENING

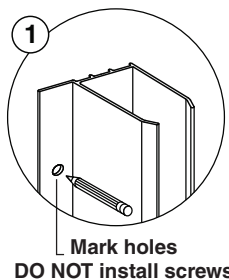
2 PEOPLE REQUIRED

Place completed frame onto the tube located edge **A** at the edge of the flat surface of the deck. Push wall posts against wall and position the posts with a level and mark the mounting holes on the wall. Remove the frame; drill 1/8" holes at marked locations.

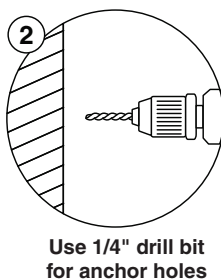
Use the anchors if NOT securing to studs (use 1/4" drill bit).

Remove frame and proceed to STEP 3.

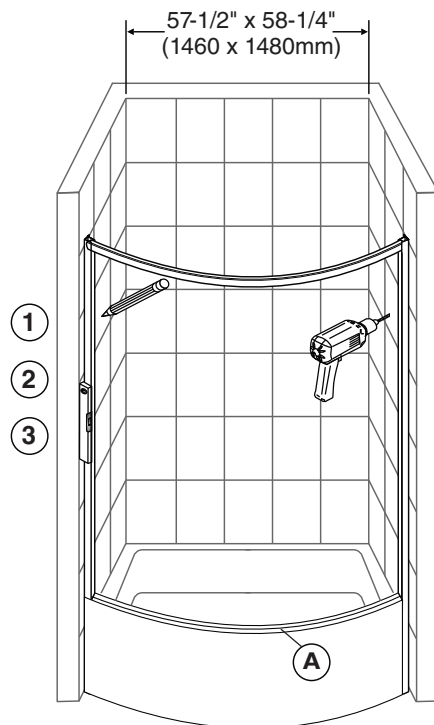
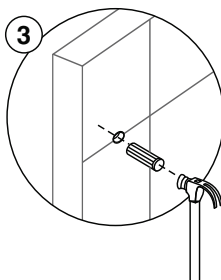
ANCHOR INSTALL



DRILL FOR ANCHOR IF NEEDED



INSTALL ANCHOR IF NEEDED



3 FITTING FIXED GLASS PANEL INTO FRAME ASSEMBLY

RIGHT-HAND FIXED PANEL SHOWN. SEE PAGE 8 FOR LEFT-HAND VERSION.

- ☐ 1. Place Retaining Blocks (12) on glass at top and bottom (see Fig. A) and use them as guides to install the top and bottom Water Deflectors (15). Once the Water Deflectors are in place, remove the Retaining Blocks for later installation.
- ☐ 2. Slide Fixed Glass Panel (14) in place, engaging Top and Bottom Rails and Door Posts.
- ☐ 3. Install top & bottom Retaining Blocks with screws (11) to hold Fixed Glass Panel in place.
- ☐ 4. Install Water Deflector (19) by pressing into place.
(NOTE: The Water Deflector may need to be trimmed if it extends beyond the Top (17) or Bottom (9) Horizontal Rails.)

VIEW FROM INSIDE

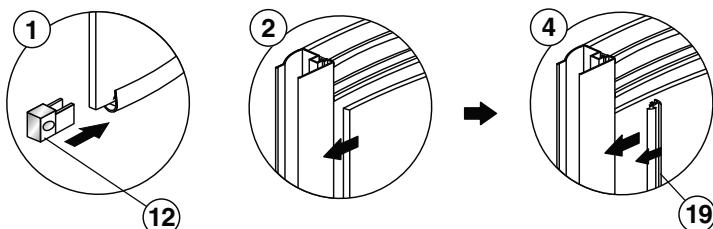
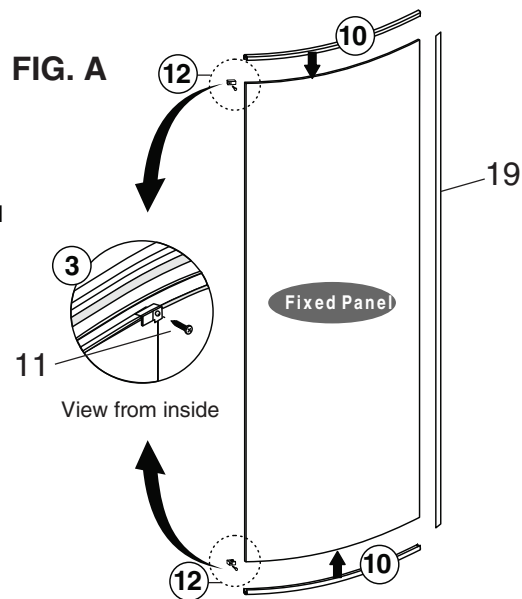


FIG. A



4

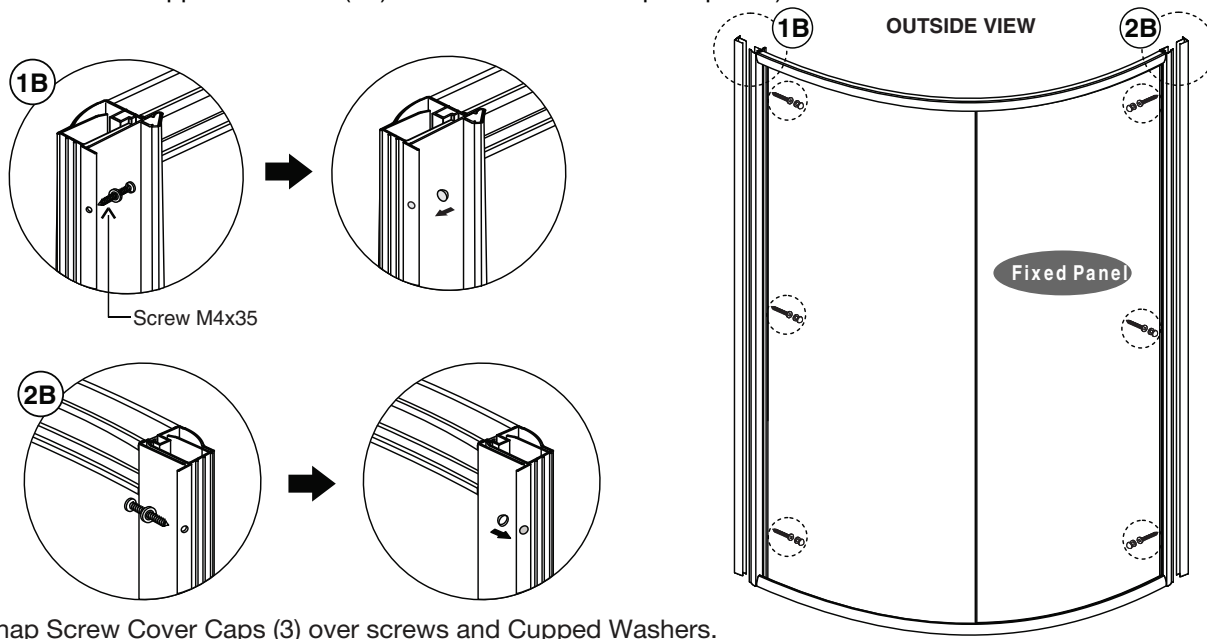
INSTALLING FRAME

2 PEOPLE REQUIRED

VIEW FROM INSIDE

1B and 2B Secure assembly to wall using previously drilled holes.

(NOTE: The Cupped Washers (23) hold Screw Cover Caps in place.)



Snap Screw Cover Caps (3) over screws and Cupped Washers.

5

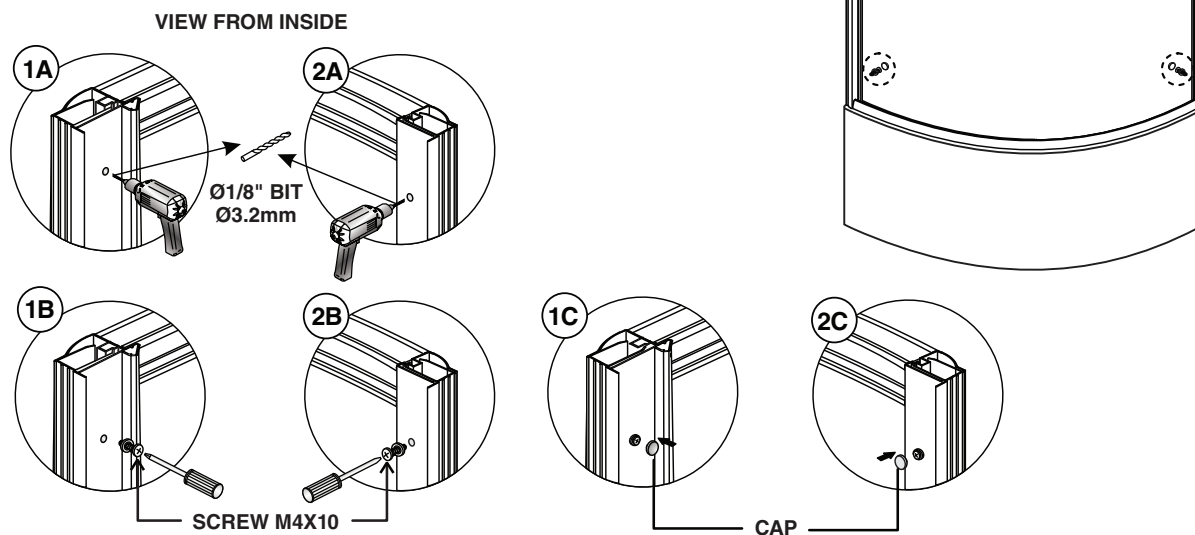
FIXING ASSEMBLY TO WALL POSTS

Ensure door assembly is centered in opening. Push down to top of tub before anchoring screws to wall posts.

1A & 2A — Drill Pilot Holes

1B & 2B — Cupped Plastic Washer hold Cap in place

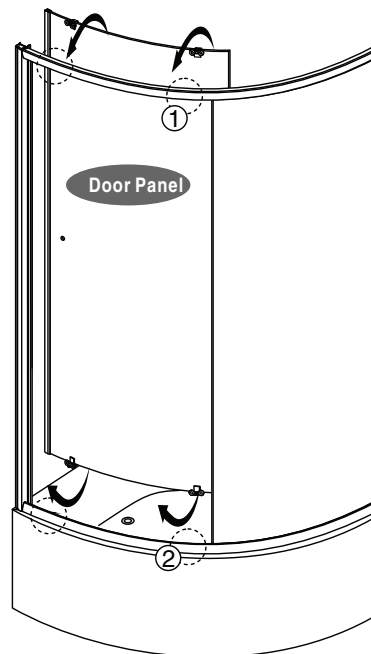
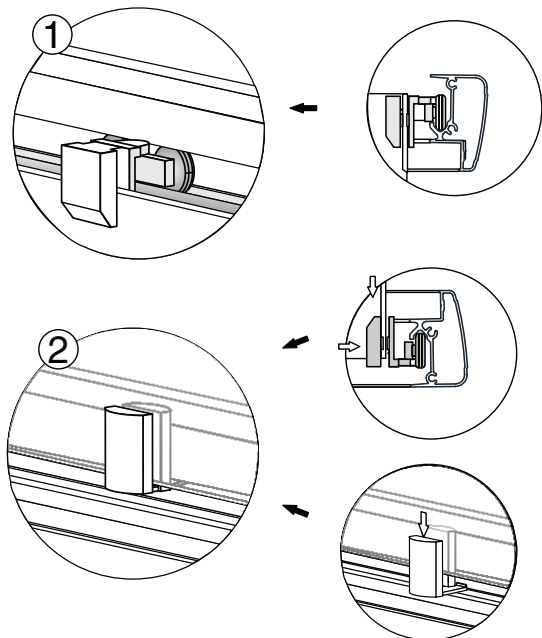
1C & 2C — Snap Cap in place



6 INSTALLING SLIDING DOORS

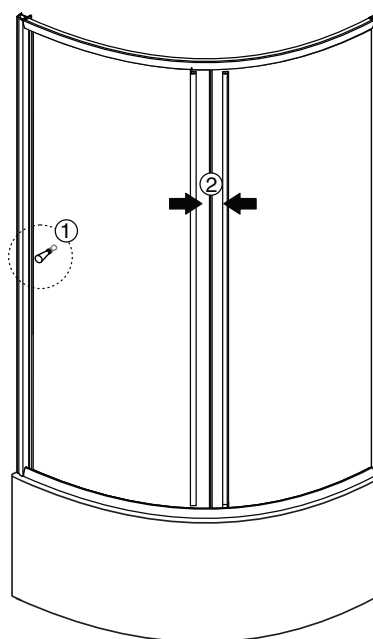
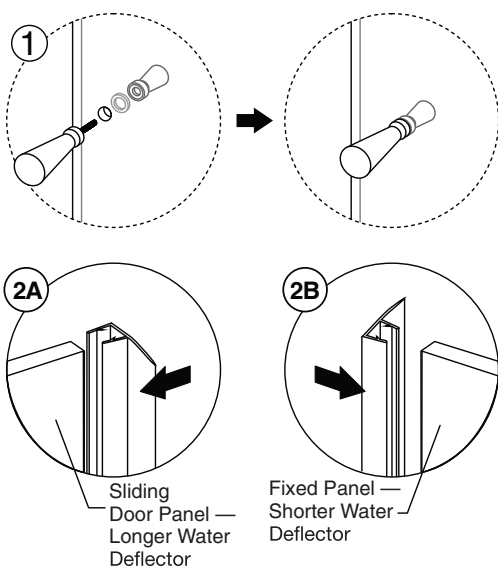
- Hang door in track as shown in (1). Depress lower Rollers and seat as shown in (2).

(If Top & Bottom Rollers need to be reversed, see page 8.)



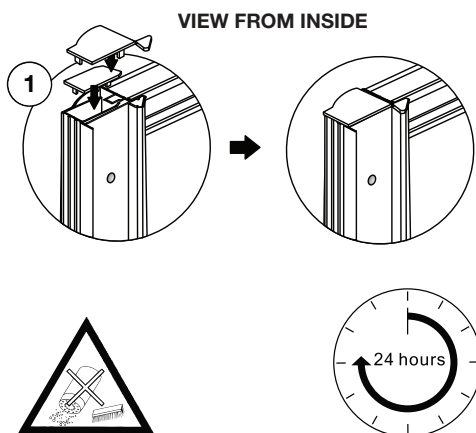
7 ADD DOOR HANDLES AND WATER DEFLECTORS

- Screw Handle (5) in place as shown in 1.
- Install Water Deflectors (15) as shown in 2A & 2B.
- Install Magnetic Seal (8) on Sliding Glass Door (13).

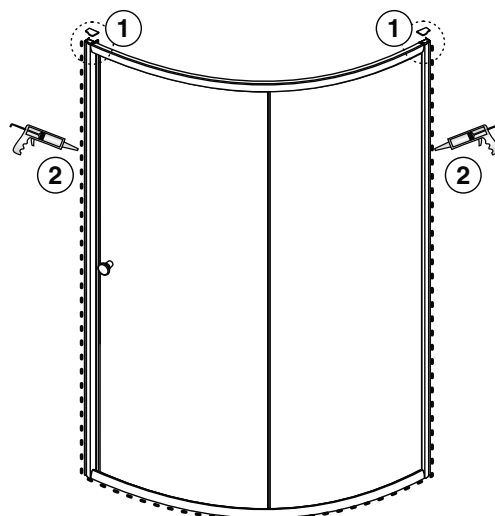


APPLY SILICONE CAULKING & PROFILE COVERS

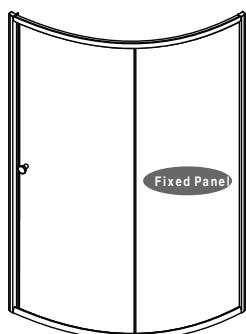
☐ Snap Profile Covers (20) in place as shown in 1.



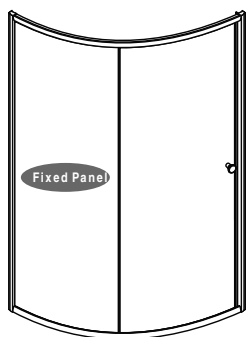
Allow 24 hours for silicone to dry before use.



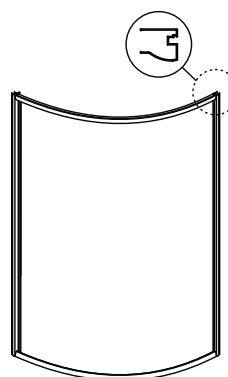
FIXED GLASS PANEL - CHANGING SIDES



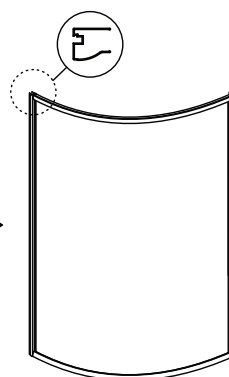
RIGHT HAND - FIXED GLASS PANEL



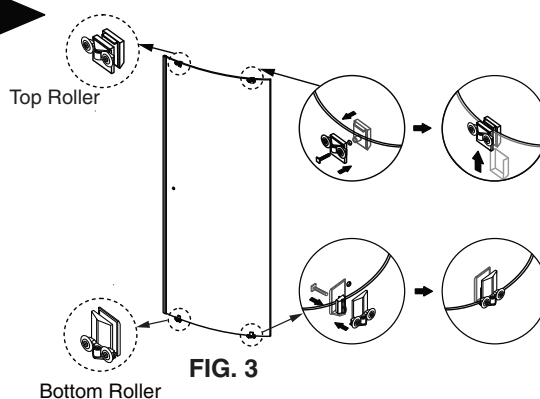
LEFT HAND - FIXED GLASS PANEL



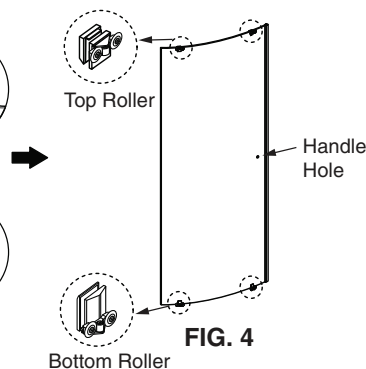
**FIG. 1
RIGHT HAND
FIXED GLASS PANEL**



**FIG. 2
LEFT HAND
FIXED GLASS PANEL**



**SLIDING DOOR
RIGHT-HAND FIXED GLASS PANEL**



**SLIDING DOOR
LEFT-HAND FIXED GLASS PANEL**

To convert to Left-Hand Fixed Glass Panel, invert the Sliding Glass Panel so the Handle Hole is as shown above. Disassemble Top & Bottom Rollers & re-install appropriate Rollers to top & bottom of Sliding Glass Panel.

MAINTENANCE:

Two primary materials are used to manufacture your new American Standard shower enclosure: tempered glass and anodized aluminum. To assure a long lasting finish on the enclosure, wipe it down with a towel after each use.

For occasional, more concentrated cleaning efforts **Lysol Non-Abrasive Bathroom Cleaner** works extremely well. Be sure that any over spray falling on the aluminum frame is rinsed thoroughly and dried. Many over-the-counter cleaners, if applied to the aluminum and left on, will harm the metal finish and cause permanent damage even though their directions indicate safe use on shower doors. Never use a scouring agent to clean the aluminum.

AS AMERICA, INC. LIMITED LIFETIME WARRANTY FOR SHOWER DOORS

AS America, Inc. ("American Standard") warrants to the original consumer purchaser that it will, at its sole option, repair or replace this product or any part of this product, if it confirms that the product is defective in materials or workmanship under normal use and maintenance for the lifetime of this product.

This warranty does not apply to commercial installations. Commercial installations shall have a limited warranty of 3 year(s).

This limited warranty DOES NOT COVER the following:

1. Defects or damage arising from shipping, installation, alterations, accidents, abuse, misuse, lack of proper maintenance and use of other than genuine American Standard replacement parts, in all cases whether caused by a plumbing contractor, service company, the owner or any other person.
2. Deterioration through normal wear and tear.
3. HARD WATER DAMAGE, OR DAMAGES RESULTING FROM ABUSE OR MISUSE OR FROM FAILURE TO INSTALL OR MAINTAIN THIS PLUMBING PRODUCT IN ACCORDANCE WITH THE WRITTEN INSTRUCTIONS FURNISHED BY AS AMERICA, INC.
4. USE OF CLEANING PRODUCTS CONTAINING CALCIUM HYPO CHLORITE (CHLORINE), SCOURING POWDERS OR PADS SHALL NOT BE COVERED.
5. THE USE OF SCENTED CANDLES IN CLOSE PROXIMITY WITH THIS PRODUCT CAN RESULT IN PERMANENT STAINING OF THE FINISH.
6. Expense of normal maintenance.
7. All costs of removal, transportation, labor, reinstallation or other costs including postage and/or shipping costs to obtain warranty service shall be paid by the consumer.
8. ANY LIABILITY FOR CONSEQUENTIAL OR INCIDENTAL DAMAGES, ALL OF WHICH ARE HEREBY EXPRESSLY DISCLAIMED. ANY IMPLIED WARRANTIES, INCLUDING THOSE OF MERCHANTABILITY OR FITNESS FOR PURPOSE INTENDED ARE SPECIFICALLY EXCLUDED. (Some jurisdictions do not allow limitations on how long an implied warranty lasts, or the exclusion or limitation of incidental or consequential damages, so these limitations and exclusions may not apply to you.)
9. Responsibility for compliance with local code requirements ARE EXCLUDED FROM THIS WARRANTY. (Since local code requirements vary greatly distributors, dealers, installation contractors and users of plumbing products should determine whether there are any code restrictions on the installation or use of a specific product.)

This limited warranty gives you specific legal rights. You may have other statutory rights that vary from state to state or from province to province, in which case this limited warranty does not affect such statutory rights.

For service under this warranty, it is suggested that a claim be made through the contractor or dealer from or through whom the product was purchased, or that a service request (including a description of the product model and of the defect) be sent to the following with proof of purchase or original receipt:

In the United States:
American Standard Brands
P.O. Box 6820
Piscataway, New Jersey 08855
Attention: Director of Consumer Affairs

For residents of the United States, warranty information may also be obtained by calling the following toll free number: (800) 442-1902
www.americanstandard.com

In Canada:
AS Canada ULC
5900 Avebury Rd.
Mississauga, Ontario
Canada L5R 3M3

Toll Free: (800) 387-0369
www.americanstandard.ca

In Mexico:
American Standard B&K Mexico
S. de R.L. de C.V.
Via Morelos #330
Col. Santa Clara
Ecatepec 55540 Edo. Mexico
Toll Free: 01-800-839-1200
www.americanstandard.com.mx