

Metering Handwash Faucet

TECK®
COMMERCIAL

DELTA®

SPECIFICATION: (example)

• HEAVY-DUTY CAST BRASS

- single hole mount faucet
- Polished chrome plated finish
- Vandal Resistant Brass Handle activator
- Delta® metering slow close cartridge
- Two Body mounted stainless steel Anti-Rotation locking pins
- Vandal resistant spout outlet
- Total flow not to exceed 0.25 gallon per handle activation**
- Now up to 63mm (2.50") max. deck thickness

☐ **87T104** With Push Button

☐ **87T105** With Lever Handle
ADA compliant requires less than 5 lbs. operating force



87T104



86T1104

SPECIFICATION: (example)

☐ **86T1104**

- Single hole mount faucet
- Polished chrome plated finish
- Vandal Resistant brass push button
- Delta® metering slow close cartridge
- Vandal resistant spout outlet
- Total flow not to exceed 0.25 gallon per handle activation**

☐ **86T0104**

- Same as 86T1104 but with (86T151) 4" cast brass, polished chrome plated coverplate

Engineer/Architect Approval

Model Specified:

Approval:

Date:

SPECIFICATION: (example)

• HEAVY-DUTY CAST BRASS

- single hole mount faucet
- Polished chrome plated finish
- Vandal Resistant Brass Handle activator
- Delta® metering slow close cartridge
- Two Body mounted stainless steel Anti-Rotation locking pins
- Mixing tee and inlet checks
- Vandal resistant spout outlet
- Total flow not to exceed 0.25 gallon per handle activation**
- Now up to 63mm (2.50") max. deck thickness

☐ **87T110** With Push Button

☐ **87T111** With Lever Handle
ADA compliant requires less than 5 lbs. operating force



87T111



87T151

COVERPLATE

SPECIFICATION: (example)

☐ **87T151** with center faucet hole, two holdown shanks

• HEAVY DUTY FORGED CAST BRASS

- 102mm (4") center
- Polished chrome plated finish
- With locating holes for 87T104, 87T105, 87T110 and 87T111 metering faucets with anti-rotation locking pins

• For secure Public Washroom Faucet/Fixture Installations


Flow Rates are at 60 PSI.
Note: Use this page front and back as a product submittal sheet.

Refer to www.specselect.com for individual models.

Delta reserves the right (1) to make changes in specifications and materials, and (2) to change or discontinue models, both without notice or obligation. Dimensions are for reference only. See current full-line price book or www.specselect.com for finish options and product availability.

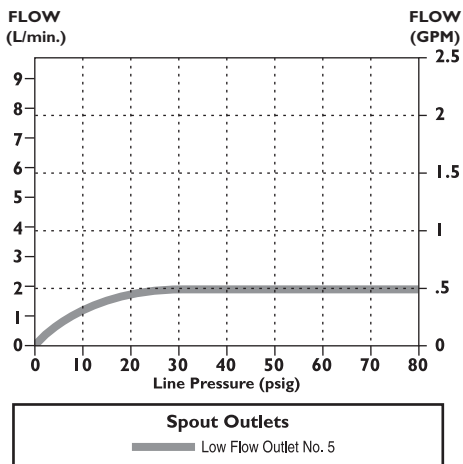
DSP-87T Rev. D

Approvals:

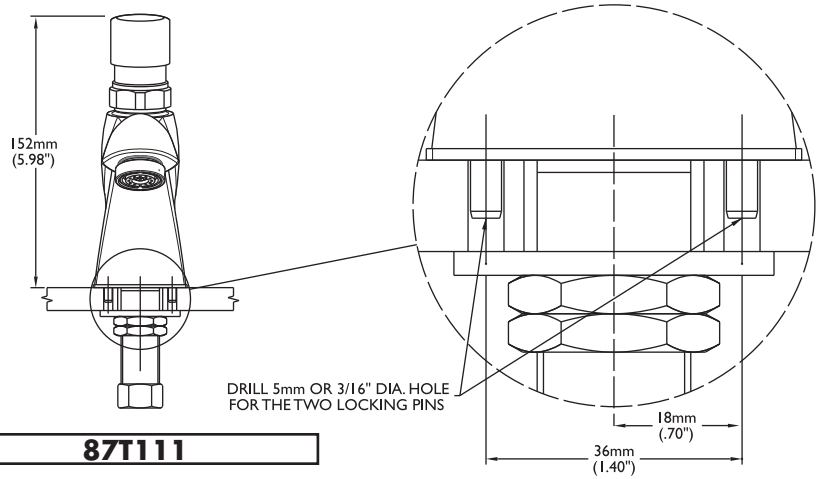
- CSA certified
- Complies to ASME A112.18.1/CSA B125.1
-  Lever Handle meets ADA compliance to ICC/ANSI A117.1/ADA
- Verified compliant with 0.25% weighted average Pb content regulations

(Contact Delta Representative for State and/or Local Approvals.)

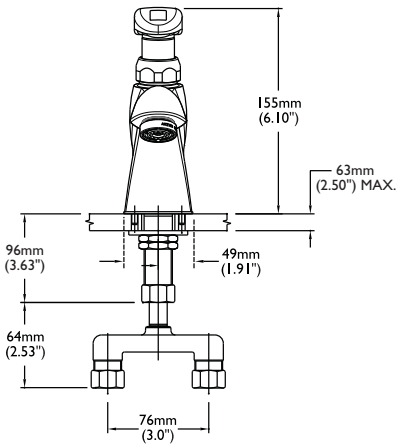
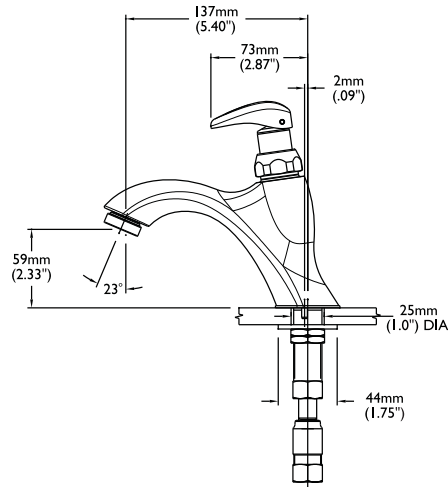
FLOW RATE vs PRESSURE



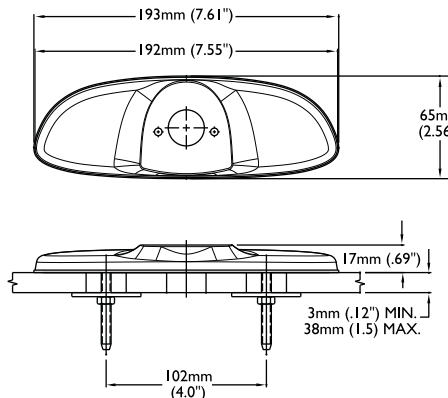
87T104 - 87T111 - LOCKING PINS



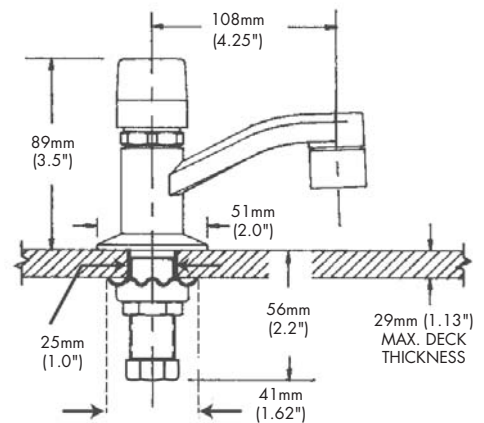
87T111



87T151



86T1104



INLETS - 1/2" MIP/Coupling Nuts

Note: Measurements may vary $\pm 6\text{mm}$ (0.25")

Refer to www.specselect.com for individual models.

Note: Use this page front and back as a product submittal sheet.