

### FloWise® DUAL FLUSH ROUND FRONT TOILET LESS SEAT

#### ❑ 2489.216

- Vitreous china
- Low-consumption Dual Flush Toilet  
Full flush 6.0 Lpf/1.6 gpf,  
Partial flush 3.0 Lpf/0.8 gpf
- Meets definition for HET (High Efficiency Toilet)
- Meets EPA WaterSense<sup>SM</sup> criteria (Pending)
- Contributes towards LEEDS points
- Round front wash down bowl
- Internal trapway fully-glazed,  
2-1/4" (57mm) trapway
- Concealed trapway bowl
- Chrome-plated top mounted push  
button actuator
- Sanitary Dam on bowl
- 100% factory flush tested
- 2 color matched bolt caps
- 2 year warranty

#### ❑ 2489.516

- Same as above, except with tank  
with Aquaguard liner

#### Separate Component Parts:

- ❑ 3074.216 Round Front Bowl with bolt caps, less seat
- ❑ 4035.216 Unlined Tank
- ❑ 4035.516 Tank with Aquaguard Liner

#### Nominal Dimensions:

29" x 17" x 30"  
(735 x 432 x 760mm)

Fixture only, seat and supply by others

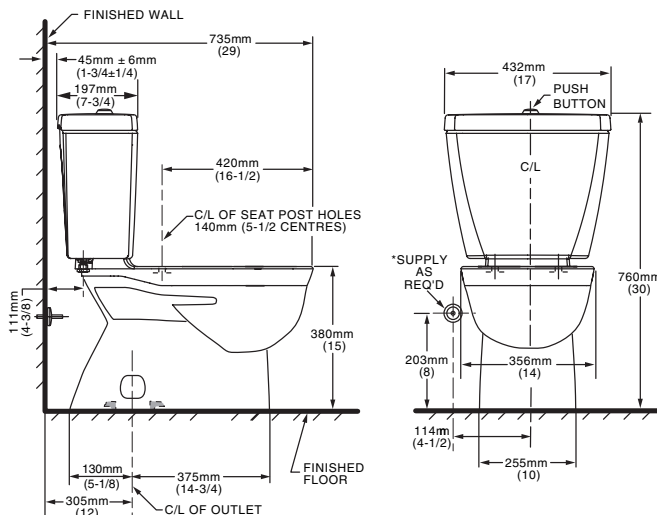
#### Compliance Certifications -

#### Meets or Exceeds the Following Specifications:

- ASME A112.19.2-200 / CSA B45.1-08

#### To Be Specified:

- ❑ Color: ❑ White
- ❑ Seat: #5308.014 Laurel Round front wood seat  
and cover
- ❑ Seat: #5282.011 Round Front EverClean® solid  
plastic seat and cover
- ❑ Seat: #5320.110 EverClean® Round Front Seat and  
cover with Slow Close Snap-Off Hinges
- ❑ Supply with stop:



#### NOTES:

THIS TOILET IS DESIGNED TO ROUGH-IN AT A MINIMUM DIMENSION OF 305MM (12") FROM FINISHED WALL TO C/L OF OUTLET. SUPPLY NOT INCLUDED WITH FIXTURE AND MUST BE ORDERED SEPARATELY.

\* DIMENSION SHOWN FOR LOCATION OF SUPPLY IS SUGGESTED. FOR ADDITIONAL INFORMATION REFER TO INSTALLATION INSTRUCTIONS SUPPLIED.

**IMPORTANT:** Dimensions of fixtures are nominal and may vary within the range of tolerance established by ANSI Standard A112.19.2. These measurements are subject to change or cancellation. No responsibility is assumed for use of superseded or voided pages

