

**CADET® PRO™ RIGHT HEIGHT®
ROUND FRONT TOILET
VITREOUS CHINA**

CADET® PRO™ RIGHT HEIGHT® ROUND FRONT TOILET

215BA 004

- Features the **Cadet® Flushing System**
- Vitreous china
- Low consumption (6.0 Lpf/1.3 gpf)
- Trade exclusive tank
- PowerWash® rim scrubs bowl with each flush
- Robust metal trip lever & metal shank fill valve
- Includes EZ-Install Tools w/colour match bowl caps
- EverClean® surface included
- Oversized 3" flush valve
- Fully-glazed 2-1/8" trapway
- 16-1/2" (419mm) rim height for accessible applications
- 12" (305mm) rough-in
- Generous 9" x 8" (229 x 203mm) water surface area
- Chrome finish trip lever is supplied
- 1,000g MaP Score** at 6.0 Lpf/1.3 gpf
- 5 year warranty



☐ **215BA 054** Same as above except with lined tank

Separate Component Parts:

- ☐ **3517B 101** Right Height® Round Front Bowl
☐ **4188A 004** Tank
☐ **4188A 054** Lined Tank

Nominal Dimensions:

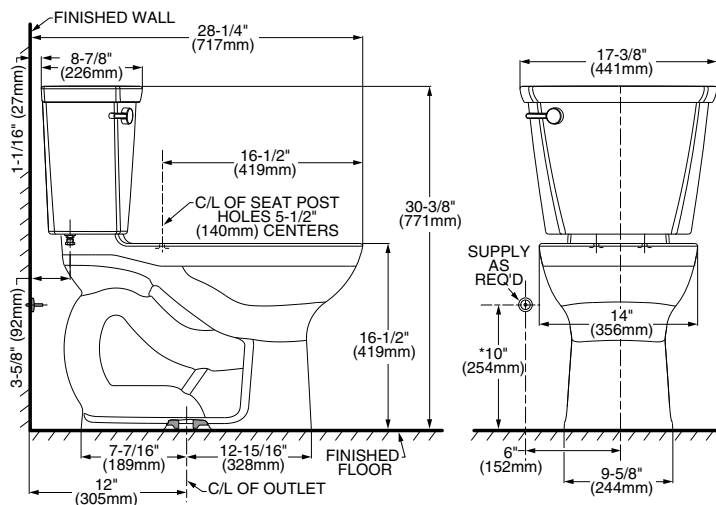
717 x 441 x 771mm (28-1/4" x 17-3/8" x 30-3/8")

Fixture only, seat and supply sold separately

Compliance Certifications -

Meets or Exceeds the Following Specifications:

- ASME A112.19.2-2008/CSA B45.1-08 for Vitreous China Fixtures



NOTES:

THIS TOILET IS DESIGNED TO ROUGH-IN AT A MINIMUM DIMENSION OF 305MM (12") FROM FINISHED WALL TO C/L OF OUTLET.
SUPPLY NOT INCLUDED WITH FIXTURE AND MUST BE ORDERED SEPARATELY.
* DIMENSION SHOWN FOR LOCATION OF SUPPLY IS SUGGESTED.

IMPORTANT: Dimensions of fixtures are nominal and may vary within the range of tolerances established by ANSI Standard A112.19.2. These measurements are subject to change or cancellation. No responsibility is assumed for use of superseded or voided pages.

**** Maximum Performance (MaP) testing performed by IAPMO R&T Lab. MaP Report conducted by Veritec Consulting, Inc. and Koeller and Company.**

To Be Specified:

- ☐ Colour: ☐ White ☐ Bone ☐ Linen
- ☐ Seat: #5320 110 EverClean® Round Front Seat with Slow Close Snap-Off Hinges
- ☐ Supply with stop:



MEETS THE AMERICANS WITH DISABILITIES ACT GUIDELINES AND ANSI A117.1 REQUIREMENTS FOR ACCESSIBLE AND USABLE BUILDING FACILITIES-CHECK LOCAL CODES.

Cadet® PRO™