



**RAPIDWAY™ 3-BOLT ELONGATED
FLUSHOMETER TOILET**

- 3-Bolt wall-mounted flushometer valve toilet, less seat
- Vitreous china
- Low consumption, operates at 1.6 gpf/6.0 Lpf
- Elongated bowl
- 1-1/2" inlet spud
- Fully-glazed 2-1/8" trapway
- 10" x 12" water surface area

- ☐ **3445J.101** Elongated bowl only, top spud
- ☐ **3445L.101** Elongated bowl only, back spud

Component Parts:

- ☐ **047007-0070A** Inlet Spud (furnished with bowl)

Nominal Dimensions:

660 x 356 x 394mm
(26" x 14" x 15-1/2")

Recommended working pressure—between
25 psi at valve when flushing and 80 psi static

Fixture only, less seat, bolt caps, and
flushometer valve

Compliance Certifications -

Meets or Exceeds the Following Specifications:

- ASME A112.19.2/CSA B45.1 for Vitreous
China Fixtures



3445J.101 Rapidway 3-Bolt Top Spud



3445L.101 Rapidway 3-Bolt Back Spud

SEE REVERSE FOR ROUGHING-IN DIMENSIONS

To Be Specified:

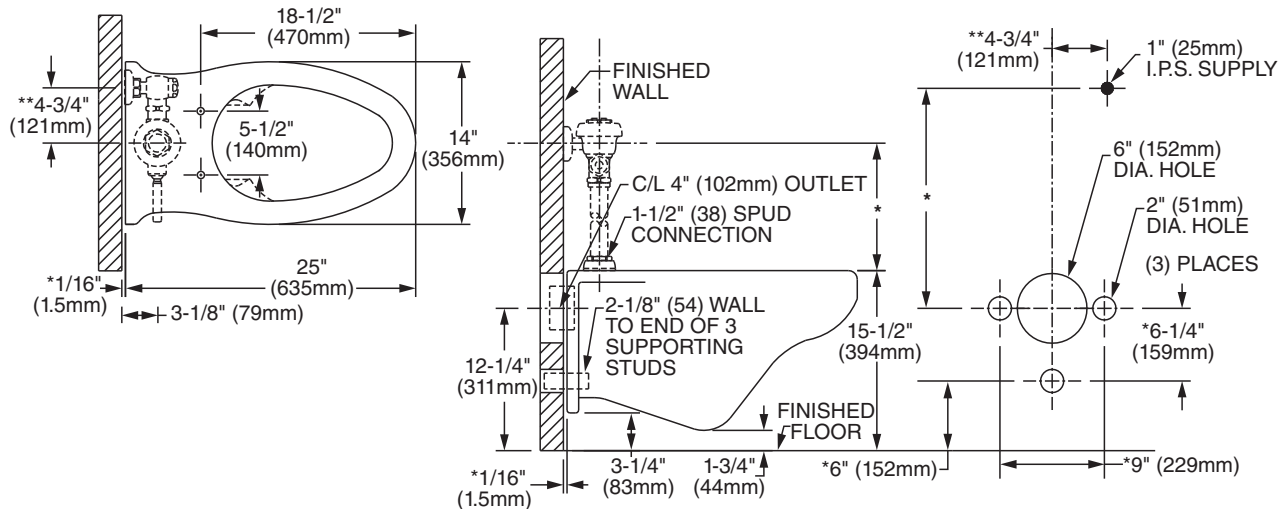
- ☐ Color: ☐ White
- ☐ Seat:
 - ☐ American Standard #5901.100 Heavy duty
open front less cover
 - ☐ American Standard #5901.110T Heavy duty
open front less cover with stainless steel check hinge
and EverClean®
- ☐ Flushometer Valve:
 - ☐ 1.6 gpf:
 - ☐ Sensor-Operated: American Standard Selectronic®
DC Power #6065.161.002 (Top Spud)
PWRX #6066.161.002 (Top Spud)
AC Power #6067.161.002 (Top Spud)
 - ☐ Manual: American Standard #6047.161.002 (Top Spud)
 - ☐ Selectronic® Battery:
6065.262.007 or 6065.362.007 (Back Spud)
 - ☐ Selectronic® Plug-in AC:
6067.262.007 or 6067.362.007 (Back Spud)



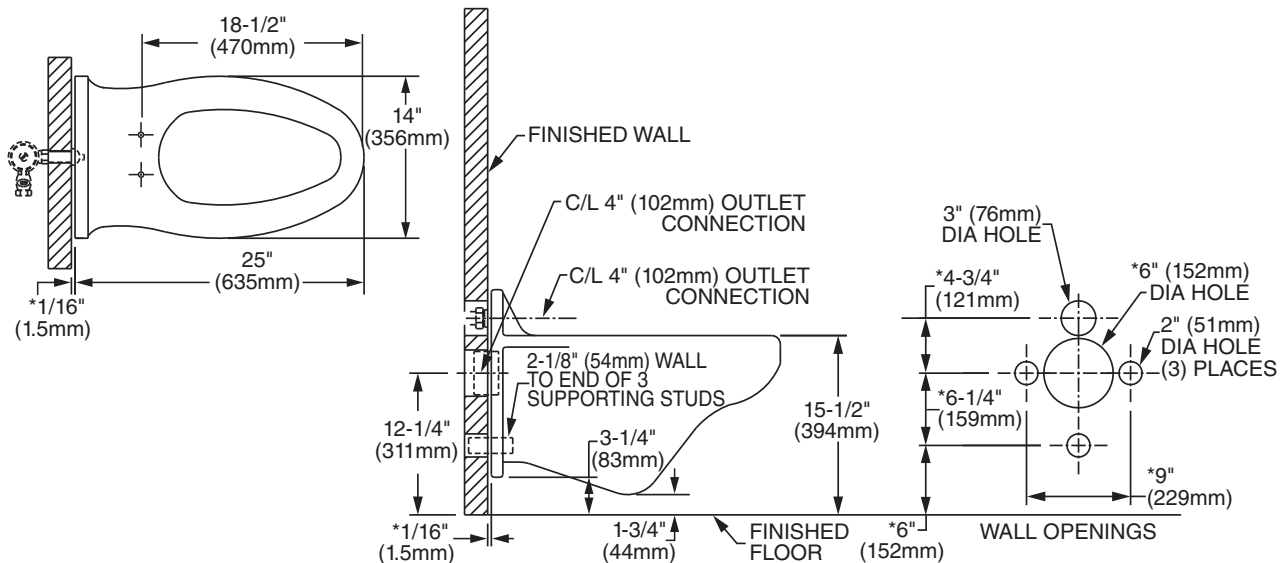
**MEETS THE AMERICANS WITH DISABILITIES ACT GUIDELINES
AND ANSI A117.1 REQUIREMENTS FOR ACCESSIBLE AND USABLE
BUILDING FACILITIES - CHECK LOCAL CODES.**

- When installed so top of seat is 432 to 483mm (17" to 19") from the
finished floor.

3445J.101 TOP SPUD



3445L.101 BACK SPUD



* THESE DIMENSIONS MUST BE MAINTAINED FOR PROPER INSTALLATION

****VARIABLE-CHECK WITH MANUFACTURER OF FLUSH VALVE FOR PROPER ROUGH-IN**

NOTES:

- Toilet designed to meet ADA accessibility standards when top of seat height set at 432 to 483mm (17" to 19") from finished floor.

WASTE OUTLET SEAL RING MUST BE NEOPRENE OR GRAPHITE-FELT (WAX RING NOT RECOMMENDED).

SUGGESTED 2mm (1/16) CLEARANCE BETWEEN FACE OF WALL AND BACK OF BOWL.

TO COMPLY WITH AREA CODE GOVERNING THE HEIGHT OF VACUUM BREAKER ON THE FLUSHOMETER VALVE, THE PLUMBER MUST VERIFY DIMENSIONS SHOWN FOR SUPPLY ROUGHING.

FLUSHOMETER VALVE NOT INCLUDED WITH FIXTURE AND MUST BE ORDERED SEPARATELY.

PSYCHROMETER VALVE NOT INCLUDED WITH FIXTURE AND MUST
CARRIER FITTING AS REQUIRED TO BE FURNISHED BY OTHERS.

PROVIDE SUITABLE REINFORCEMENT FOR ALL WALL SUPPORT.

IMPORTANT: Dimensions of fixtures are nominal and may vary within the range of tolerances established by ANSI Standard A112.19.2.

IMPORTANT: Dimensions of fixtures are nominal and may vary within the range of tolerances established by ANSI Standard A11.1. These measurements are subject to change or cancellation. No responsibility is assumed for use of superseded or voided pages.