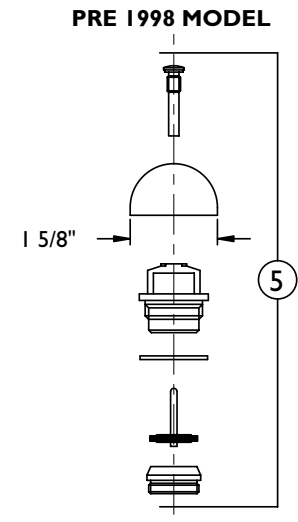
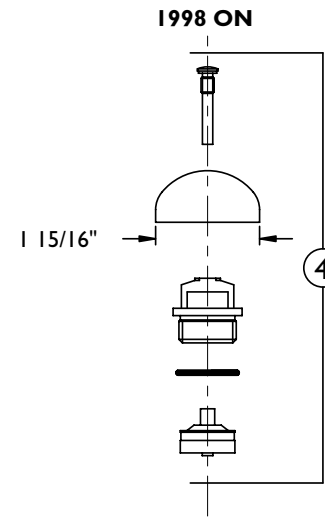
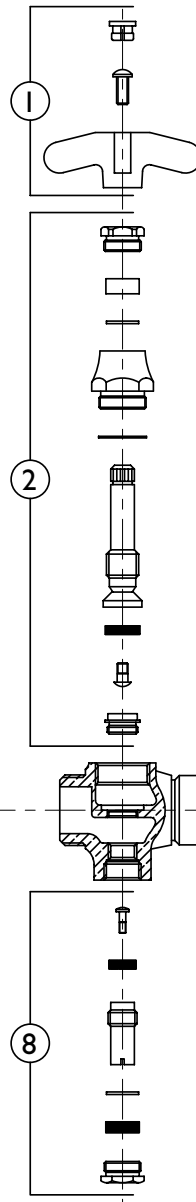
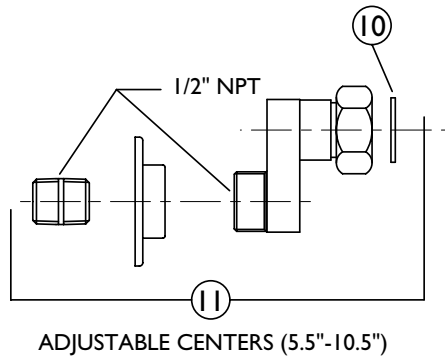
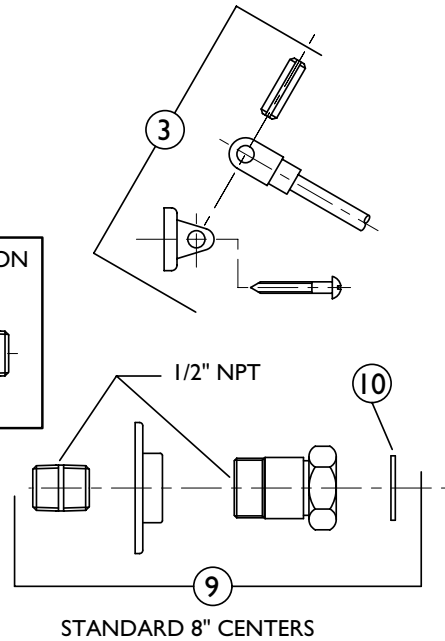
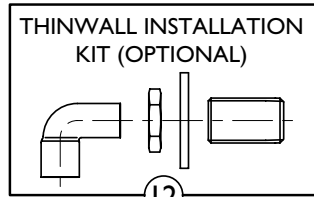


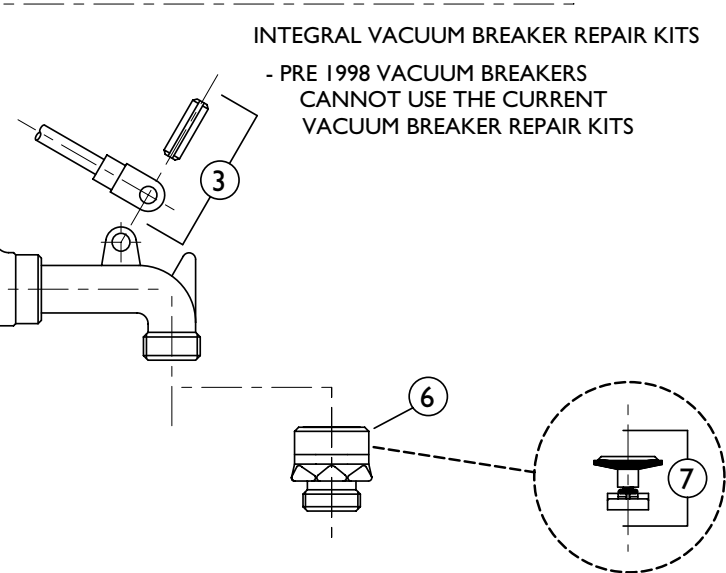
NOTE:

**NO PARTS ARE TRANSFERABLE
BETWEEN THE 28T9 SERIES
AND ANY OTHER 28T SERIES
(ie. 28T1/2/3/4/6/7/8)**

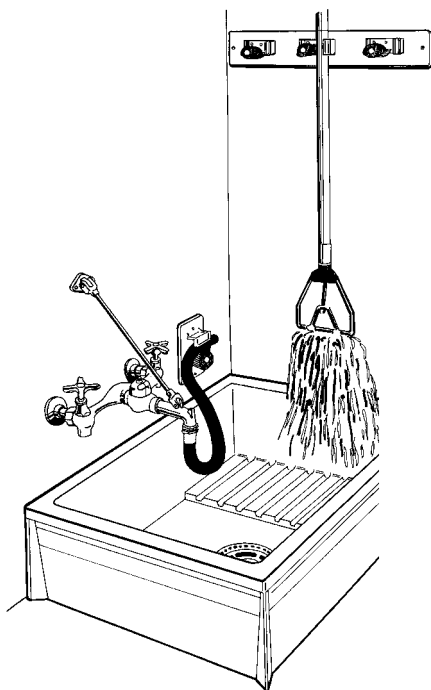


INTEGRAL VACUUM BREAKER REPAIR KITS

- PRE 1998 VACUUM BREAKERS
CANNOT USE THE CURRENT
VACUUM BREAKER REPAIR KITS



PARTS TABLE ON PAGE 44



ITEM #	PART #	DESCRIPTION
1	060027A	Cross Handle with Screw, Red and Blue Index – 1 of each
2	060034A	Stem Structure Complete with Renewable Seat – 1 per – For HOT or COLD Side – (Note: 9 mm hex drive on inside of seat)
3	060056A	Pail Brace complete
4	060302A	Vacuum Breaker Repair Parts Kit (1998 on)
5	060018A	Vacuum Breaker Repair Parts Kit – (Pre-1998)
6	77476	ASSE Approved Hose End Vacuum Breaker (1998)
7	500066A	Hose End Vacuum Breaker Repair Kit
8	060058A	Integral Stop Stem Structure Complete – 1 of each part
9	060198A	Shank Kit for 8" Centers – 1 of each part
10	060469A	Fibre Washer Kit – 12 per
11	060345A	Shank Kit for Adjustable Centers – 1 of each part
12	060473A	Optional Thin Wall Trim – Shank, Steel Washer, Nut & Elbow – 2 of each

