

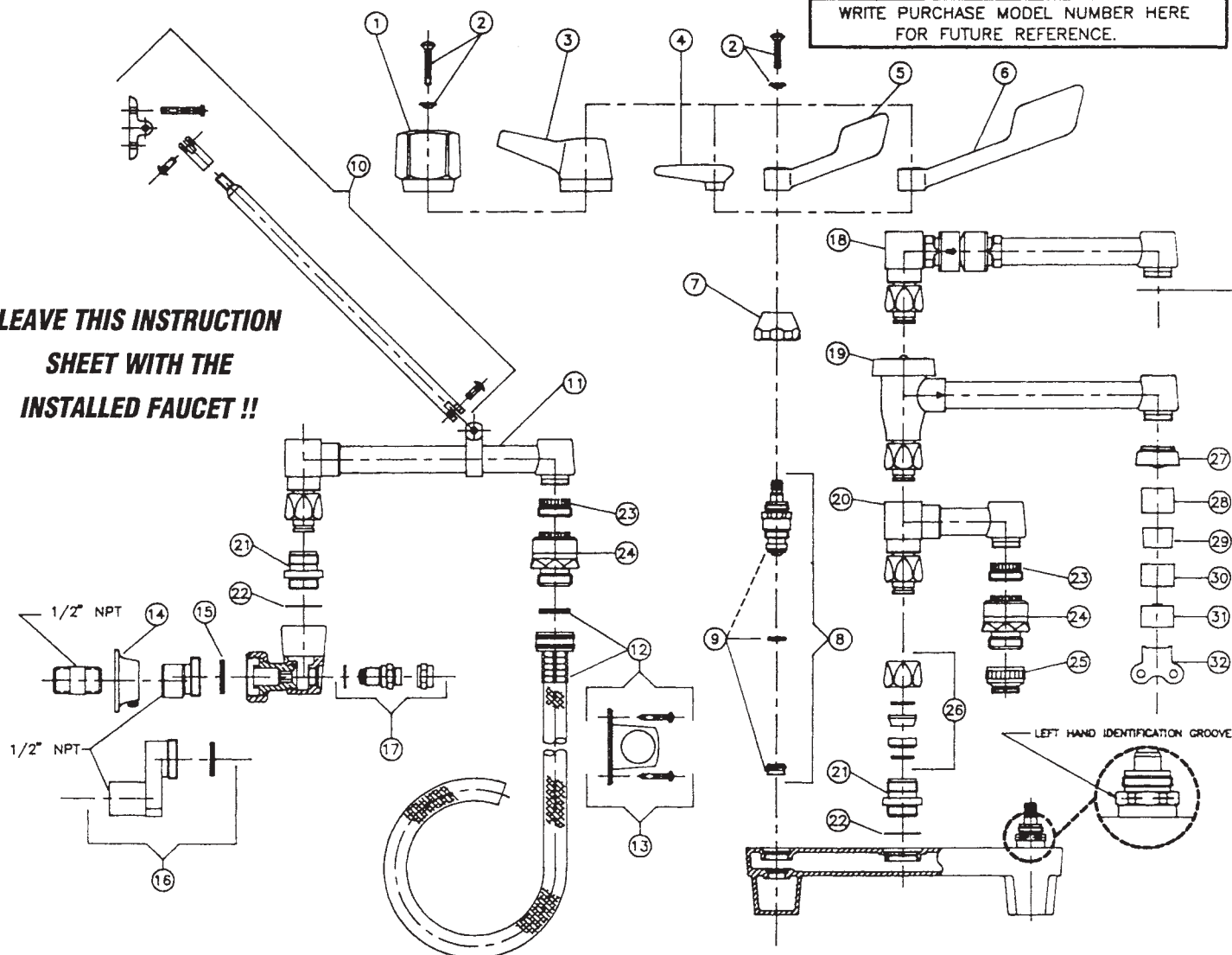


# WALLMOUNT SINK FAUCET – RIGID SPOUT

## 28T

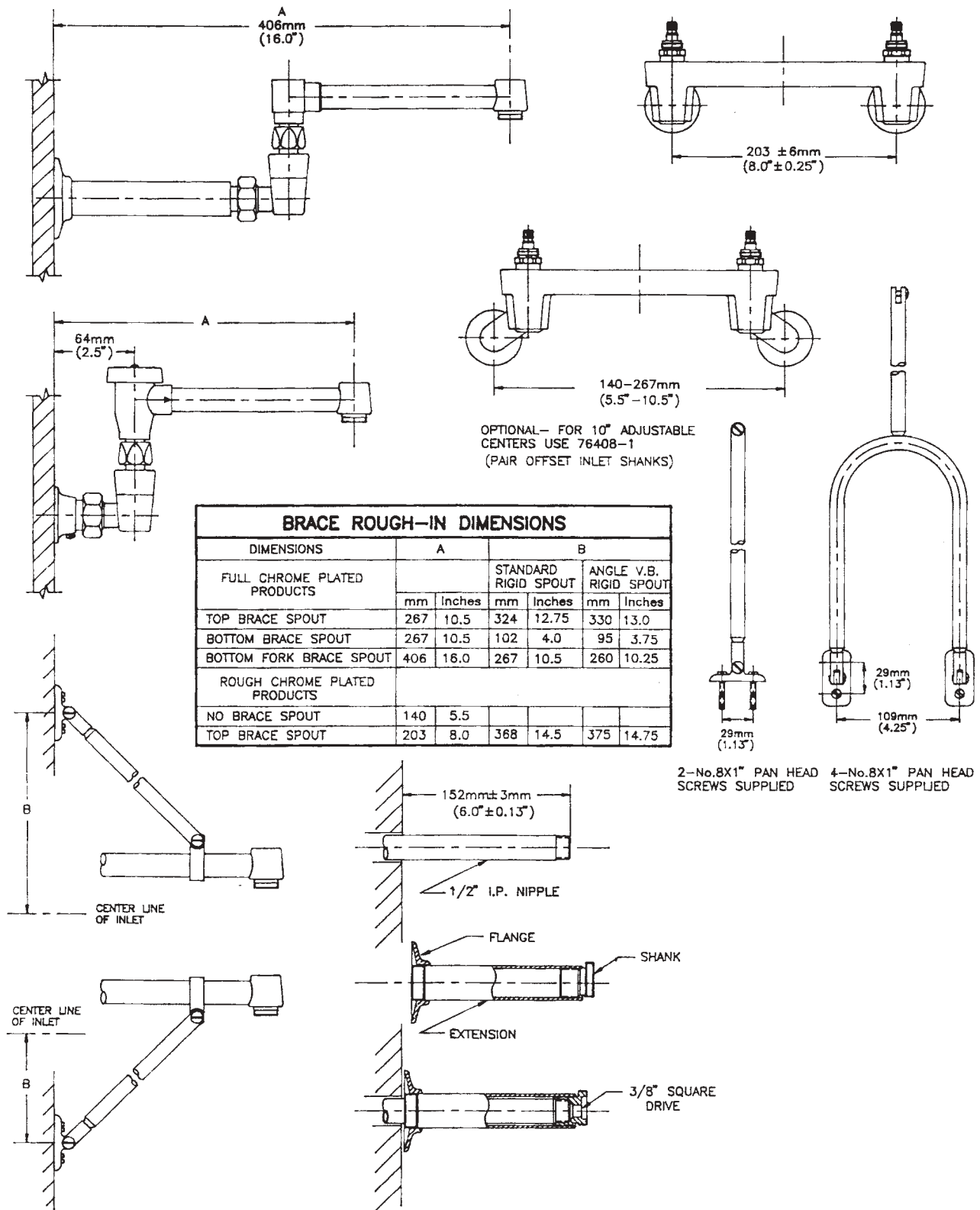
WRITE PURCHASE MODEL NUMBER HERE  
FOR FUTURE REFERENCE.

**LEAVE THIS INSTRUCTION  
SHEET WITH THE  
INSTALLED FAUCET !!**



ITEM #	PART #	DESCRIPTION
1	76403	5 Fluted Handle w/Screw, Red & Blue Index
2	060022A	Handle Screws & Index Kit (includes short & long handle screws, red & blue index washers)
	17483	No. 3 Scrulox 8 Screwdriver for above
	060145A	Short Handle Screw Pkg. For No. 3, 4, 5, & 6 Handles
	060146A	Long Handle Screw Package For No. 1 Handle
	060148A	Red & Blue Index Package
	310259A	No. 3 Scrulox Drive Bit
	310296A	No. 3 Square Drive Bit
3	77189	2 3/4" Hooded Lever Handle w/Screw, Red & Blue Index
4	76407-1	Three Arm Cross Handle w/Screw, Red & Blue Index
5	76405-1	4" Blade Handle w/Screw, Red & Blue Index
6	76406-1	6" Wrist Handle w/Screw, Red & Blue Index
7	060037A	Sani-Guards
8	77260	RH CP Brass Tuf-Teck Structure w/Gasket, Renewable Seat
	77261	LH CP Brass Tuf-Teck Structure w/Gasket, Renewable Seat
9	060021A	Structure Repair Parts Kit (includes seat washers, seat washer screws, stem O-rings, capnut O-rings, capnut fibre gaskets, renewable seats)
	060139A	Seat Washer Package
	060140A	Stem O-Ring Package
	060142A	Structure O-Ring Package
	060144A	Renewable Seat Package
10	76094-1	Straight Brace & Wall Bracket Complete
	76093	Long Fork Brace & Wall Bracket Complete
11	77132	Top Brace Spout Complete
	77133	Bottom Brace Spout Complete
	77131	Plain Spout (8" long) Complete

ITEM #	PART #	DESCRIPTION
12	28T909	1500mm (59") Hose w/Hose Guide Ring & Screws
13	060055A	Hose Guide Rings and Screws
14	76689	Wall Flange and Screw
15	T449	Rubber Washer
16	76408-1	10" Offset Shank, & Washer (2 of each)
17	76079-10	Integral Stem Structure Complete w/Stop Cap
18	77453	Plain In-Line VB Spout Complete
	77454	Top Brace In-Line VB Spout Complete
	77455	Bottom Brace In-Line VB Spout Complete
19	77135	Plain VB Spout Complete
	77136	Top Brace VB Spout Complete
	77137	Bottom Brace VB Spout Complete
20	77130	Plain Spout (3" long) Complete
21	17030	Spout Adaptor
22	16538	Fibre Gasket
23	70105	Female Aerator Thread x Garden Hose End Adaptor
24	76066	CP Garden Hose End Vacuum Breaker
25	77128	Aerator Thread x Female Garden Hose End Adaptor
26	060026A	Spout Repair Kit (includes retaining rings, O-Rings, swivel and rigid collars, and spout nut)
	060143A	Spout O-Ring Package
	060199A	Rigid and Swivel Collar Package
27	76842	VP Rose Spray
28	77144	VP Moderator (Non Aerating) Outlet
29	77142	Flow Control Aerator
30	77158	VP Flow Control Aerator & 17195 Wrench
31	77322	VP 0.5 GPM Flow Control & 17195 Wrench
32	17195	VP Aerator Wrench



## ***BEFORE INSTALLING THE SPOUT OUTLET***

Turn hot and cold supply handles to the full open position. Flush out the lines for at least one minute to clean out any construction debris (particles of solder, copper chips, pipe dope, teflon tape, etc.). After flushing shut-off water at faucet and assemble spout outlet to the faucet spout.

## ***MAINTENANCE***

When performing routine maintenance, do not void your warranty by installing non-genuine parts. Use only authorized Cambridge Brass parts. After any maintenance, remove the spout outlet, turn handle(s) to the full open position, and flush lines for one minute. This will remove debris from lines which can damage internal parts of faucet and create leaks. After flushing, shut off water at faucet and reassemble spout outlet.

## ***CARE INSTRUCTIONS***

This CAMBRIDGE BRASS faucet is designed & engineered in accordance with the highest quality and performance standards. With proper care it will give years of trouble free service. Care should be given to the cleaning of this product. Although its finish is extremely durable, it can be DAMAGED by ACIDIC CLEANERS (eg. cleaners designed specifically for vitreous lavatories and water closets), HARSH ABRASIVE or POLISH. To clean, simply wipe with a damp cloth and blot dry with a soft cloth.

## WARRANTY

Delta Commercial Faucet Division, 420 Burbrook Place, London, Ontario, Canada N6A 4L6, warrants to the original purchaser that products manufactured by it, will be free from defects in material, finish and/or workmanship for a period of five (5) years from date shown on purchaser's invoice.

Delta Commercial Faucet Division will, at its option, repair or replace any part which proves to be defective in material and/or workmanship during the warranty period under normal installation, water and service conditions, and use. If Delta Commercial Faucet Division concludes that the returned part was manufactured by Delta Commercial Faucet Division and is, in fact, defective, then Delta Commercial Faucet Division will honour the warranty stated herein.

LABOUR CHARGES AND/OR DAMAGES INCURRED IN INSTALLATION, REPAIR OR REPLACEMENT AS WELL AS CONSEQUENTIAL, SPECIAL, INDIRECT OR PUNITIVE DAMAGES CONNECTED THEREWITH ARE EXCLUDED AND WILL NOT BE PAID BY DELTA COMMERCIAL FAUCET DIVISION.

THIS IS THE EXCLUSIVE WARRANTY MADE BY DELTA COMMERCIAL FAUCET DIVISION WHICH DOES NOT MAKE ANY OTHER WARRANTY OF ANY KIND, INCLUDING ANY IMPLIED WARRANTIES OF MERCHANTABILITY OR FITNESS FOR A PARTICULAR PURPOSE.

Some states do not allow the exclusion or limitation of incidental or consequential damages, so the above limitation may not apply to you.

This warranty is for commercial products only from Delta Commercial Faucet Division and Cambridge Brass and is void for any damage to the product due to misuse, abuse, neglect, accident, improper installation, any use violative of instructions furnished by Delta Commercial Faucet Division or any use of replacement parts other than genuine Delta Commercial Faucet Division parts.