

LOFT® RIGHT HEIGHT® ELONGATED ONE-PIECE TOILET WITH SEAT

VITREOUS CHINA

LOFT® RIGHT HEIGHT® ELONGATED ONE-PIECE TOILET WITH SEAT

❑ 2535 128

- Vitreous china
- High Efficiency Toilet (4.8 Lpf/1.07 gpf)
- Meets EPA WaterSense® criteria
- One-piece design with side trip lever
- Space saving compact design - Elongated Right Height bowl fits in the same space as a round front toilet
- EverClean® surface included
- Elongated siphon action jetted bowl with 2-1/8" trapway
- Rim height at 16-1/2" (419mm) for accessible application
- Includes slow close telescoping seat
- 3" Flush Valve
- Generous 9" x 8" (229 x 203mm) water surface area
- 2 bolt caps
- Chrome Trip Lever
- 5 year warranty

Nominal Dimensions:

723 x 355 x 727mm (28-7/16" x 14" x 28-5/8")

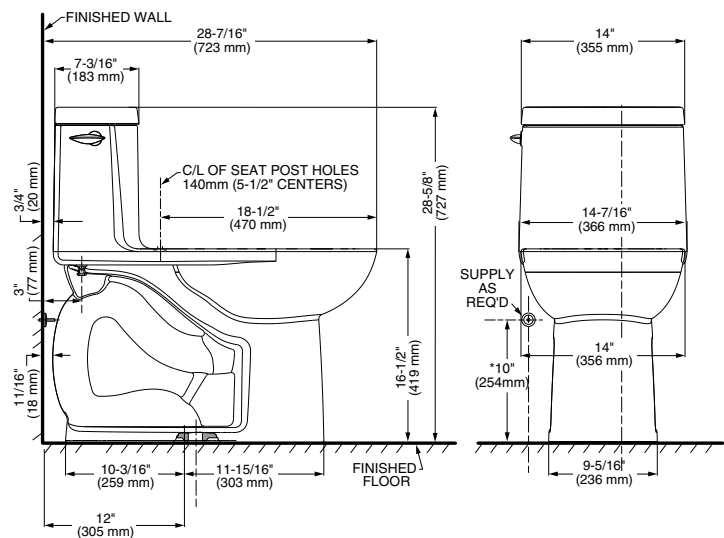
Fixture only, supply by others

❑ 5359A 051B Elongated molded seat

Compliance Certifications -

Meets or Exceeds the Following Specifications:

- ASME A112.19.2-2008/CSA B45.1-08 for Vitreous China Fixtures
- US EPA WaterSense® Specification for HETs



NOTES:

THIS TOILET IS DESIGNED TO ROUGH-IN AT A MINIMUM DIMENSION OF 305MM (12") FROM FINISHED WALL TO C/L OF OUTLET.
SUPPLY NOT INCLUDED WITH FIXTURE AND MUST BE ORDERED SEPARATELY.
* DIMENSION SHOWN FOR LOCATION OF SUPPLY IS SUGGESTED.

IMPORTANT: Dimensions of fixtures are nominal and may vary within the range of tolerance established by ANSI Standard A112.19.2
These measurements are subject to change or cancellation. No responsibility is assumed for use of superseded or voided pages.

To Be Specified:

- ❑ Colour: ❑ White
- ❑ Supply with stop:



MEETS THE AMERICANS WITH DISABILITIES ACT GUIDELINES AND ANSI A117.1 REQUIREMENTS FOR ACCESSIBLE AND USABLE BUILDING FACILITIES-CHECK LOCAL CODES.

