

BOXE ABOVE-COUNTER SINK

- ☐ **0504 001** Centre Hole Only
- ☐ **0504 008** Faucet Holes on 8" (203 mm) centres

- Contemporary geometric above counter vessel design
- Generous bowl depth with centre drain
- Available with 8" faucet holes or centre hole only
- Front overflow
- Supplied with cut-out template

Nominal Dimensions:

23-1/4" X 17-1/2" (591 X 445mm)
4-3/8 (110mm) height above counter

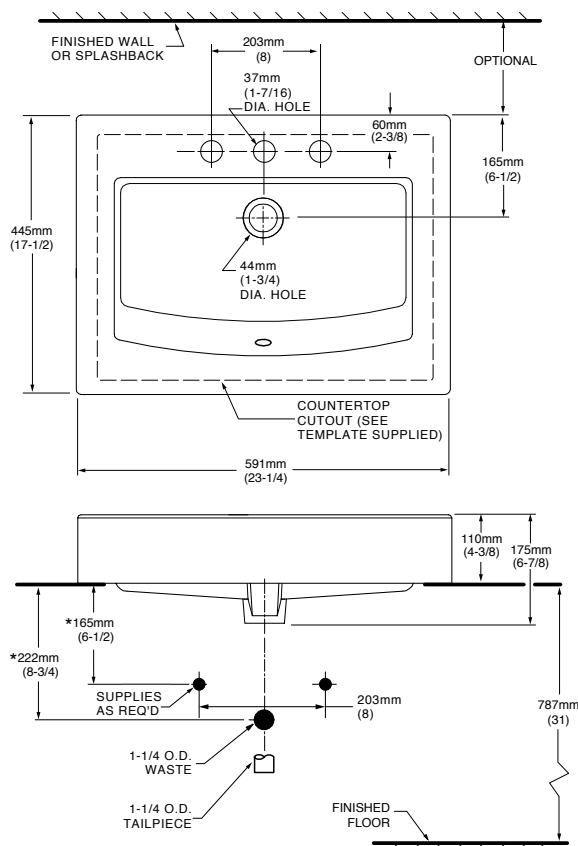
Bowl sizes:

18-3/4" x 11-1/4" (476 x 286mm)
4-1/4" (108mm) deep

Compliance Certifications -

Meets or Exceeds the Following Specifications:

- ASME A112.19.2M for Vitreous China Fixtures
- CAN/CSA B45 series
- A1995 National Building Code, section 3.7 and CAN/CSA - B651-M90 and OBC 3.7



NOTES:

*DIMENSIONS SHOWN FOR LOCATION OF SUPPLIES AND "P" TRAP ARE SUGGESTED. FAUCETS NOT INCLUDED WITH FIXTURE AND MUST BE ORDERED SEPARATELY. FOR COUNTERTOP CUTOUT AND INSTALLATION INSTRUCTIONS USE TEMPLATE SUPPLIED WITH SINK.

IMPORTANT: Dimensions of fixtures are nominal and may vary within the range of tolerances established by ANSI Standard A112.19.2. These measurements are subject to change or cancellation. No responsibility is assumed for use of superseded or voided pages.

To Be Specified:

- ☐ Colour:
- ☐ Faucet*:
- ☐ Faucet Finish:
- ☐ Supplies:
- ☐ 1-1/4" Trap:

Recommended:

- ☐ 9386 000 Cardiff Console Table Frame
- ☐ 9387 504 Laminated Marble Table Top
- pre-cut for BOXE sink

* See faucet section for additional models available